



**DESIGN & CONSTRUCTION GROUP
THE GOVERNOR NELSON A. ROCKEFELLER
EMPIRE STATE PLAZA
ALBANY, NY 12242**

ADDENDUM NO. 1 TO PROJECT NO. 45832

**CONSTRUCTION, ELEVATOR, HVAC, PLUMBING, AND ELECTRICAL WORK
REHABILITATE ELEVATORS
CULTURAL EDUCATION CENTER
EMPIRE STATE PLAZA
ALBANY, NY**

April 05, 2024

NOTE: This Addendum forms a part of the Contract Documents. Insert it in the Project Manual. Acknowledge receipt of this Addendum in the space provided on the Bid Form.

BIDDING REQUIREMENTS

1. DOCUMENT 001114 ADVERTISEMENT FOR BIDS – ADD Paragraph to Read:

“Prospective bidders will be allowed to visit the job site a second time to take field measurements, access car tops and pits, and examine the existing conditions of the project area at 8:00 a.m. on April 10, 2024, Empire State Plaza, Cultural Education Center, Museum Entrance, Albany, NY”

ELEVATOR WORK

2. SECTION 140120 – 10, Article 1.06, E: Add Item 22 to Read:
- “22. Existing Equipment Data Plate Information (Contractor shall field verify)
- a. Armor Elevator Gear Machine Data Plate
 - 1) Machine Type: 7
 - 2) Capacity: 21,000 lb.
 - 3) Speed: 100 ft/min.
 - 4) Roped 2:1
 - 5) Gear Ration 79:2
 - 6) Thrust: V-025005A
 - b. Schindler Elevator Corp.-AC Hoist Motor
 - 1) HP: 75
 - 2) Frame: 444T
 - 3) Volts: 430
 - 4) Phase: 3
 - 5) Amps: 90 RPM: 900 Frequency: 60
 - c. Motion Control Engineering Inc Data Plate
 - 1) Job No.: 2000028364
 - 2) Model: IMC-AC
 - 3) Voltage: 480 vac

- 4) HP: 75
 - 5) Serial No.: 3032636
 - d. Courion Industries Freight Elevator Door Control Data Plate
 - 1) Factory No.: 69-834
 - 2) Volts: 120
 - 3) Horsepower 1/20
 - e. Armor Elevator Crosshead Plate Data
 - 1) Contract L-4791
 - 2) Capacity 21000
 - 3) Wt, of Car Complete: 14,000lbs
 - 4) Speed: 100
 - 5) Cables: (8) 5/8”
3. SECTION 140120 – 19, Article 2.01, A, 7: Add Item f to Read:
“f. MAD Elevator”
4. SECTION 142821 – 2, Article 2.01, C, 1, a: Change Item 1 to Read:
“1) Sand and clean all painted surfaces in preparation for application primer and finish coat of paint. Entrance frame and door panel color sample to be approved by Director’s Representative prior to application.”
5. SECTION 142821 – 2, Article 2.01, H, 8: Change note “a” to read:
“Refer to Hoistway Entrance Finish Schedule for doors to be primed and receive a factory adhered wrap.”
6. SECTION 142821 – 2, Article 2.01, H, 8: Add Item b to Read:
“b. Refer to Hoistway Entrance Finish Schedule for doors to be primed with factory paint. Color to be selected by the Director’s Representative from manufacturers full range of available colors.”

GENERAL DRAWINGS

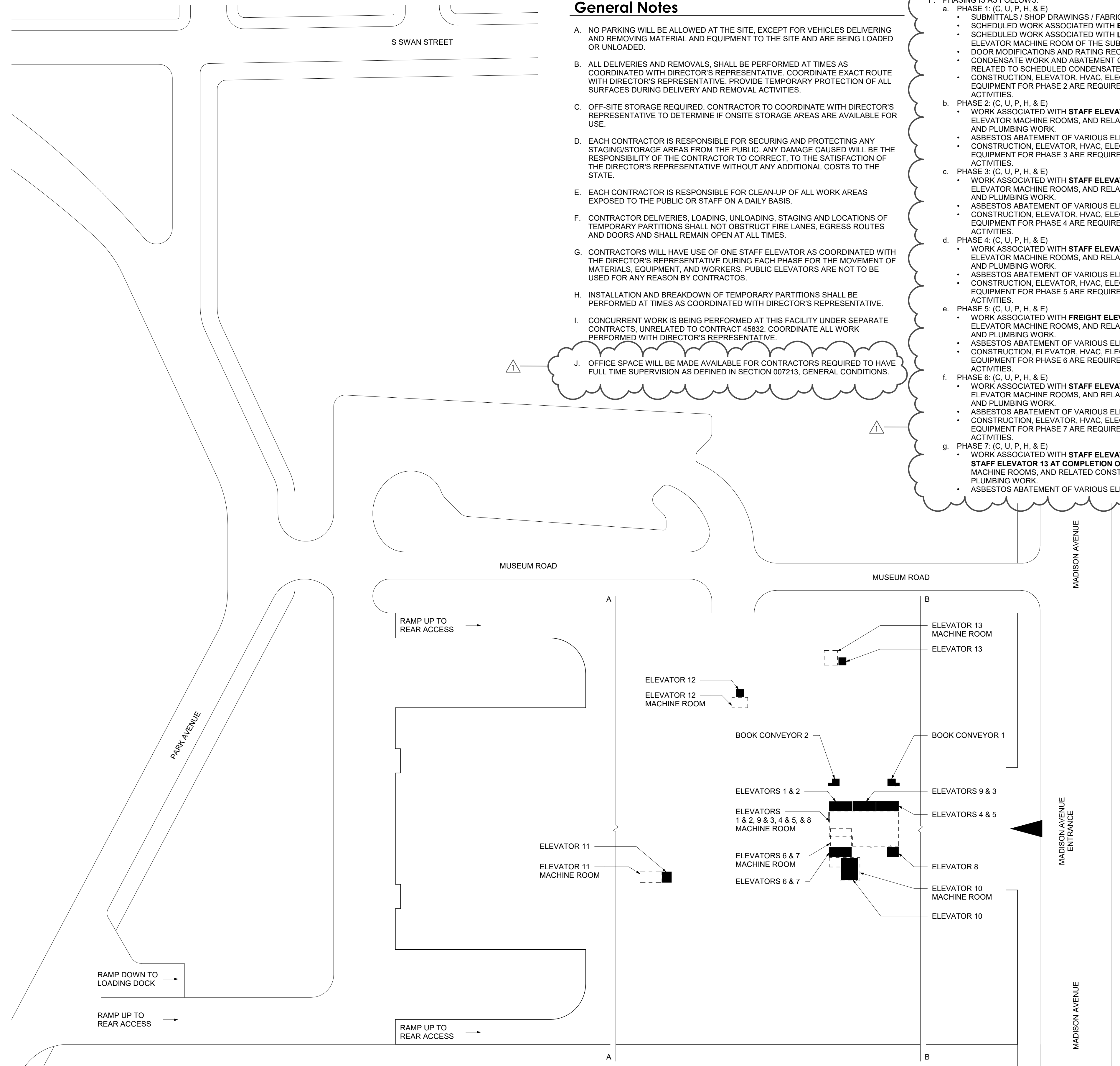
7. Drawing No. S-102:
a. Detail No. 9; Elevator Pit Structure Plan – Elevator 13: Change detail callout “10/S-102 SIM” to read, “11/S-102 SIM”.
8. Revised Drawings:
a. Drawing No. G-101 and H-102, noted “REVISED DRAWING 4/5/2024” accompany this Addendum and supersede the same numbered originally issued drawings.

ELEVATOR DRAWINGS

9. Revised Drawings:
a. Drawing No. U-103 and U-501, noted “REVISED DRAWING 4/5/2024” accompany this Addendum and supersede the same numbered originally issued drawings.

END OF ADDENDUM

Brady M. Sherlock, P.E.
Director, Division of Design
Design & Construction



Allowance Information

- CONCURRENT WORK IS BEING PROVIDED UNDER SEPERATE ALLOWANCES RELATED TO THESE DOCUMENTS SCOPE OF WORK FOR FIRE ALARM AND SECURITY. WORK SHALL BE COORDINATED BETWEEN EACH TRADES WORK.
 - FIRE ALARM VENDOR SHALL PROVIDE ALL DEVICES, FINAL CONNECTIONS, PROGRAMMING AND TESTING. THE ELECTRICAL CONTRACTOR SHALL PROVIDE INFRASTRUCTURE FOR FIRE ALARM SCOPE INCLUDING ALL RACEWAYS, CONDUIT, WIRING AND BACKBOXES.
 - SECURITY INCLUDES THE REPLACEMENT OF EXISTING PROXIMITY CARDS AND CAMERAS AND THE ADDITION OF CAMERAS. SECURITY VENDOR SHALL PROVIDE ALL DEVICES, FINAL CONNECTIONS, PROGRAMMING AND TESTING. THE ELECTRICAL CONTRACTOR SHALL PROVIDE INFRASTRUCTURE FOR SECURITY SCOPE INCLUDING ALL RACEWAYS, CONDUIT, WIRING AND BACKBOXES.

General Notes

- NO PARKING WILL BE ALLOWED AT THE SITE, EXCEPT FOR VEHICLES DELIVERING AND REMOVING MATERIAL AND EQUIPMENT TO THE SITE AND ARE BEING LOADED OR UNLOADED.
- ALL DELIVERIES AND REMOVALS, SHALL BE PERFORMED AT TIMES AS COORDINATED WITH DIRECTOR'S REPRESENTATIVE. COORDINATE EXACT ROUTE WITH DIRECTOR'S REPRESENTATIVE. PROVIDE TEMPORARY PROTECTION OF ALL SURFACES DURING DELIVERY AND REMOVAL ACTIVITIES.
- OFF-SITE STORAGE REQUIRED. CONTRACTOR TO COORDINATE WITH DIRECTOR'S REPRESENTATIVE TO DETERMINE IF ONSITE STORAGE AREAS ARE AVAILABLE FOR USE.
- EACH CONTRACTOR IS RESPONSIBLE FOR SECURING AND PROTECTING ANY STAGING/STORAGE AREAS FROM THE PUBLIC. ANY DAMAGE CAUSED WILL BE THE RESPONSIBILITY OF THE CONTRACTOR TO CORRECT, TO THE SATISFACTION OF THE DIRECTOR'S REPRESENTATIVE WITHOUT ANY ADDITIONAL COSTS TO THE STATE.
- EACH CONTRACTOR IS RESPONSIBLE FOR CLEAN-UP OF ALL WORK AREAS EXPOSED TO THE PUBLIC OR STAFF ON A DAILY BASIS.
- CONTRACTOR DELIVERIES, LOADING, UNLOADING, STAGING AND LOCATIONS OF TEMPORARY PARTITIONS SHALL NOT OBSTRUCT FIRE LANES, EGRESS ROUTES AND DOORS AND SHALL REMAIN OPEN AT ALL TIMES.
- CONTRACTORS WILL HAVE USE OF ONE STAFF ELEVATOR AS COORDINATED WITH THE DIRECTOR'S REPRESENTATIVE DURING EACH PHASE FOR THE MOVEMENT OF MATERIALS, EQUIPMENT, AND WORKERS. PUBLIC ELEVATORS ARE NOT TO BE USED FOR ANY REASON BY CONTRACTORS.
- INSTALLATION AND BREAKDOWN OF TEMPORARY PARTITIONS SHALL BE PERFORMED AT TIMES AS COORDINATED WITH DIRECTOR'S REPRESENTATIVE.
- CONCURRENT WORK IS BEING PERFORMED AT THIS FACILITY UNDER SEPARATE CONTRACTS, UNRELATED TO CONTRACT 45832. COORDINATE ALL WORK PERFORMED WITH DIRECTOR'S REPRESENTATIVE.
- OFFICE SPACE WILL BE MADE AVAILABLE FOR CONTRACTORS REQUIRED TO HAVE FULL TIME SUPERVISION AS DEFINED IN SECTION 007213, GENERAL CONDITIONS.

General Phasing Notes

- THE SCHEDULED WORK OF EACH CONTRACT, (C, U, P, H, & E, INCLUDING ALLOWANCE SCOPE WITHIN APPLICABLE CONTRACTS), FOR EACH PHASE IS TO BE COMPLETED BY ALL CONTRACTS PRIOR TO MOVING ON TO THE NEXT PHASE.
- IT IS THE RESPONSIBILITY OF EACH PRIME CONTRACTOR OF EACH CONTRACT, (C, U, P, H, & E), TO COORDINATE WITH OTHER TRADES WORK TO ENSURE THE COMPLETION OF EACH PHASE.
- COMPLETION OF EACH PHASE WILL BE DETERMINED BY THE DIRECTOR'S REPRESENTATIVE AND WILL INVOLVE NECESSARY INSPECTIONS AND / OR PUNCH LISTS TO TURN OVER PORTION OF WORK TO THE OWNER FOR USE.
- CONTRACTOR MAY PERFORM WORK OF SUBSEQUENT PHASES AS APPROVED BY THE DIRECTOR'S REPRESENTATIVE.
- ACCESS TO THE MEZZANINE LEVEL WILL BE FROM STAIR 15 AT FLOOR 4 OR 5.
- PHASING IS AS FOLLOWS:
 - PHASE 1: (C, U, P, H, & E)
 - SUBMITTALS / SHOP DRAWINGS / FABRICATION
 - SCHEDULED WORK ASSOCIATED WITH **BOOK CONVEYORS 1 & 2**
 - SCHEDULED WORK ASSOCIATED WITH **LINEAR TRENCH DRAIN SYSTEM** WITHIN THE ELEVATOR MACHINE ROOM OF THE SUB-BASEMENT.
 - DOOR MODIFICATIONS AND RATING RECERTIFICATION.
 - CONDENSATE WORK AND ABATEMENT OF ASBESTOS CONTAINING MATERIAL RELATED TO SCHEDULED CONDENSATE WORK.
 - CONSTRUCTION, ELEVATOR, HVAC, ELECTRICAL, AND PLUMBING, MATERIALS AND EQUIPMENT FOR PHASE 2 ARE REQUIRED ONSITE FOR THE START OF PHASE 2 ACTIVITIES.
 - PHASE 2: (C, U, P, H, & E)
 - WORK ASSOCIATED WITH **STAFF ELEVATOR 9, PUBLIC ELEVATOR 5**, ASSOCIATED ELEVATOR MACHINE ROOMS, AND RELATED CONSTRUCTION, HVAC, ELECTRICAL, AND PLUMBING WORK.
 - ASBESTOS ABATEMENT OF VARIOUS ELEVATOR COMPONENTS.
 - CONSTRUCTION, ELEVATOR, HVAC, ELECTRICAL, AND PLUMBING, MATERIALS AND EQUIPMENT FOR PHASE 3 ARE REQUIRED ONSITE FOR THE START OF PHASE 3 ACTIVITIES.
 - PHASE 3: (C, U, P, H, & E)
 - WORK ASSOCIATED WITH **STAFF ELEVATOR 2, PUBLIC ELEVATOR 4**, ASSOCIATED ELEVATOR MACHINE ROOMS, AND RELATED CONSTRUCTION, HVAC, ELECTRICAL, AND PLUMBING WORK.
 - ASBESTOS ABATEMENT OF VARIOUS ELEVATOR COMPONENTS.
 - CONSTRUCTION, ELEVATOR, HVAC, ELECTRICAL, AND PLUMBING, MATERIALS AND EQUIPMENT FOR PHASE 4 ARE REQUIRED ONSITE FOR THE START OF PHASE 4 ACTIVITIES.
 - PHASE 4: (C, U, P, H, & E)
 - WORK ASSOCIATED WITH **STAFF ELEVATOR 1, PUBLIC ELEVATOR 3**, ASSOCIATED ELEVATOR MACHINE ROOMS, AND RELATED CONSTRUCTION, HVAC, ELECTRICAL, AND PLUMBING WORK.
 - ASBESTOS ABATEMENT OF VARIOUS ELEVATOR COMPONENTS.
 - CONSTRUCTION, ELEVATOR, HVAC, ELECTRICAL, AND PLUMBING, MATERIALS AND EQUIPMENT FOR PHASE 5 ARE REQUIRED ONSITE FOR THE START OF PHASE 5 ACTIVITIES.
 - PHASE 5: (C, U, P, H, & E)
 - WORK ASSOCIATED WITH **FREIGHT ELEVATOR 10, PUBLIC ELEVATOR 8**, ASSOCIATED ELEVATOR MACHINE ROOMS, AND RELATED CONSTRUCTION, HVAC, ELECTRICAL, AND PLUMBING WORK.
 - ASBESTOS ABATEMENT OF VARIOUS ELEVATOR COMPONENTS.
 - CONSTRUCTION, ELEVATOR, HVAC, ELECTRICAL, AND PLUMBING, MATERIALS AND EQUIPMENT FOR PHASE 6 ARE REQUIRED ONSITE FOR THE START OF PHASE 6 ACTIVITIES.
 - PHASE 6: (C, U, P, H, & E)
 - WORK ASSOCIATED WITH **STAFF ELEVATOR 6, STAFF ELEVATOR 11**, ASSOCIATED ELEVATOR MACHINE ROOMS, AND RELATED CONSTRUCTION, HVAC, ELECTRICAL, AND PLUMBING WORK.
 - ASBESTOS ABATEMENT OF VARIOUS ELEVATOR COMPONENTS.
 - CONSTRUCTION, ELEVATOR, HVAC, ELECTRICAL, AND PLUMBING, MATERIALS AND EQUIPMENT FOR PHASE 7 ARE REQUIRED ONSITE FOR THE START OF PHASE 7 ACTIVITIES.
 - PHASE 7: (C, U, P, H, & E)
 - WORK ASSOCIATED WITH **STAFF ELEVATOR 7, STAFF ELEVATOR 12 FOLLOWED BY STAFF ELEVATOR 13 AT COMPLETION OF ELEVATOR 12**, ASSOCIATED ELEVATOR MACHINE ROOMS, AND RELATED CONSTRUCTION, HVAC, ELECTRICAL, AND PLUMBING WORK.
 - ASBESTOS ABATEMENT OF VARIOUS ELEVATOR COMPONENTS.

Code Compliance

- APPLICABLE BUILDING CODE:**
- 2020 BUILDING CODE OF NEW YORK STATE
 - 2020 EXISTING BUILDING CODE OF NEW YORK STATE
 - 2020 ENERGY CONSERVATION CODE OF NEW YORK STATE
 - NFPA 70 NATIONAL ELECTRICAL CODE - 2017
 - NFPA 72 NATIONAL FIRE ALARM AND SIGNALING CODE - 2016
 - 2020 MECHANICAL CODE OF NEW YORK STATE
 - 2020 PLUMBING CODE OF NEW YORK STATE
 - ASME A17.1 ELEVATOR CODE - 2016
 - ICC A117.1-2009
 - ADA 2010
 - HOISTWAY VENTILATION - MAINTAIN IN COMPLIANCE WITH CODE IN AFFECT AT TIME OF CONSTRUCTION
- GENERAL CODE INFORMATION:**
- USE AND OCCUPANCY CLASSIFICATION: MIXED USE: A-1, A-2, A-3, B, S
 - CLASSIFICATION OF WORK: ALTERATION LEVEL 1 & 2
 - ALTERATION LEVEL 1: ELEVATOR MODERNIZATION
 - ALTERATION LEVEL 2: RECONFIGURATION OF SPACE
 - SUB-BASEMENT, ELEVATORS 1, 2, 3, 4, 5, 8, & 9 CONTROL ROOM
 - SUB-BASEMENT, ELEVATOR 11 MACHINE ROOM
 - SUB-BASEMENT, ELEVATOR 13 MACHINE ROOM
 - MEZZANINE LEVEL, ELEVATOR 10 MACHINE ROOM
 - MEZZANINE LEVEL, ACCESS TO OVERHEAD SPACE FOR ELEVATOR 8
 - TYPE OF CONSTRUCTION: CONSTRUCTION TYPE: ASSUMED TYPE 1A
- FIRE RESISTANCE REQUIREMENTS FOR BUILDING ELEMENTS (TABLE 601):**
- SPRINKLER PROTECTED: PARTIAL
 - PRIMARY STRUCTURE: 3 HOURS
 - EXTERIOR AND INTERIOR LOAD BEARING WALLS: 3 HOURS
 - INTERIOR NON-LOAD BEARING WALLS: 0 HOURS
 - FLOORS: 2 HOURS
 - ROOF:
 - 1 1/2 HOUR TYP
 - 0 HOUR AT ELEVATOR SHAFT OVERHEAD SHEAVE SPACE
 - PER NOTE B: NO RATING REQUIRED WHERE ROOF AND FRAMING ARE 20 FEET OR MORE ABOVE FLOOR IMMEDIATELY BELOW.
 - OTHER FIRE RESISTANCE REQUIREMENTS FOR BUILDING ELEMENTS
 - EXISTING ELEVATOR LOBBY ENCLOSURES: 1 HOUR FIRE PARTITION
 - EXISTING ELEVATOR LOBBY DOORS: 3/4 HOUR FIRE RATING
- EXISTING:**
- EXISTING MEANS OF EGRESS SHALL NOT BE MODIFIED BY THE USE OF TEMPORARY PARTITIONS DURING THE PERFORMANCE OF THIS CONTRACT. TEMPORARY PARTITIONS HAVE BEEN REFLECTED ON THE 45832-U CONTRACT DRAWINGS AND ARE LIMITED TO THE PROTECTION OF THE ELEVATOR ENTRANCES FOR THE PERFORMANCE OF CONTRACT WORK.
- SAFEGUARDS DURING CONSTRUCTION**
- COMPLY WITH THE FOLLOWING REQUIREMENTS DURING CONSTRUCTION INCLUDING, BUT NOT LIMITED TO:
- OSHA (OCCUPATIONAL SAFETY AND HEALTH ADMINISTRATION)
 - BCNYS CHAPTER 33 SAFEGUARDS DURING CONSTRUCTION
 - EBCNYS CHAPTER 15 CONSTRUCTION SAFEGUARDS
 - FCNYS CHAPTER 33 FIRE SAFETY DURING CONSTRUCTION AND DEMOLITION
- NOTE: REFER TO SPECIFICATION SECTION 014100 REGULATORY REQUIREMENTS FOR ADDITIONAL INFORMATION. DEMONSTRATE COMPLIANCE WITH REGULATORY REQUIREMENTS IN THE SITE SPECIFIC SAFETY PLAN.

Code Compliance Statement

CODE REFERENCE AND ENERGY CONSERVATION CONSTRUCTION CODE OF NEW YORK STATE

ENERGY CODE STATEMENT:
TO THE BEST OF THE REGISTERED DESIGN PROFESSIONAL'S KNOWLEDGE, BELIEF, AND PROFESSIONAL JUDGEMENT, THESE PLANS AND/OR SPECIFICATIONS ARE IN COMPLIANCE WITH THE 2020 ENERGY CODE.

UNIFORM CODE STATEMENT:
TO THE BEST OF THE REGISTERED DESIGN PROFESSIONAL'S KNOWLEDGE, BELIEF, AND PROFESSIONAL JUDGEMENT, THESE PLANS AND/OR SPECIFICATIONS ARE IN COMPLIANCE WITH THE 2020 UNIFORM CODE.

ASBESTOS AND LEAD AWARENESS

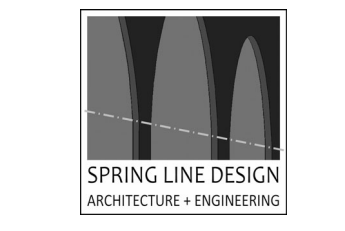
THE EXISTING BUILDING MATERIALS MAY CONTAIN ASBESTOS AND LEAD MATERIALS. REFER TO PROJECT MANUAL AND ASBESTOS CONSULTANT DOCUMENTS FOR MORE INFORMATION. IF ASBESTOS, LEAD, AND/OR SUSPECTED MATERIALS ARE DISTURBED AND/OR ENCOUNTERED, CEASE WORK OPERATION AND NOTIFY DIRECTOR'S REPRESENTATIVE IMMEDIATELY.

REVISED DRAWING 4/5/2024

1 Site Plan / First Floor Schematic Location Reference Plan 1" = 50'-0"



Architectural Resources



WARNING:
THE ALTERATION OF THIS MATERIAL IN ANY WAY, UNLESS DONE UNDER THE DIRECTION OF A COMPARABLE PROFESSIONAL, I.E. ARCHITECT FOR AN ARCHITECT, ENGINEER FOR AN ENGINEER OR LANDSCAPE ARCHITECT FOR A LANDSCAPE ARCHITECT, IS A VIOLATION OF THE NEW YORK STATE EDUCATION LAW AND/OR REGULATIONS AND IS A CLASS 'A' MISDEMEANOR.



REGISTRATION EXPIRES: 12/31/2026

CONTRACT: CONSTRUCTION, ELEVATOR, PLUMBING, HVAC, & ELECTRICAL
TITLE: **REHABILITATE ELEVATORS**

LOCATION:
CULTURAL EDUCATION CENTER
222 MADISON AVENUE
ALBANY, NY

CLIENT:
OFFICE OF GENERAL SERVICES

MARK	DATE	DESCRIPTION
1	4.5.2024	REVISED DRAWING
	2.14.2024	BID DOCUMENTS

PROJECT NUMBER: **45832 - C,U,P,H,E**

DESIGNED BY: AJR

DRAWN BY: CMV

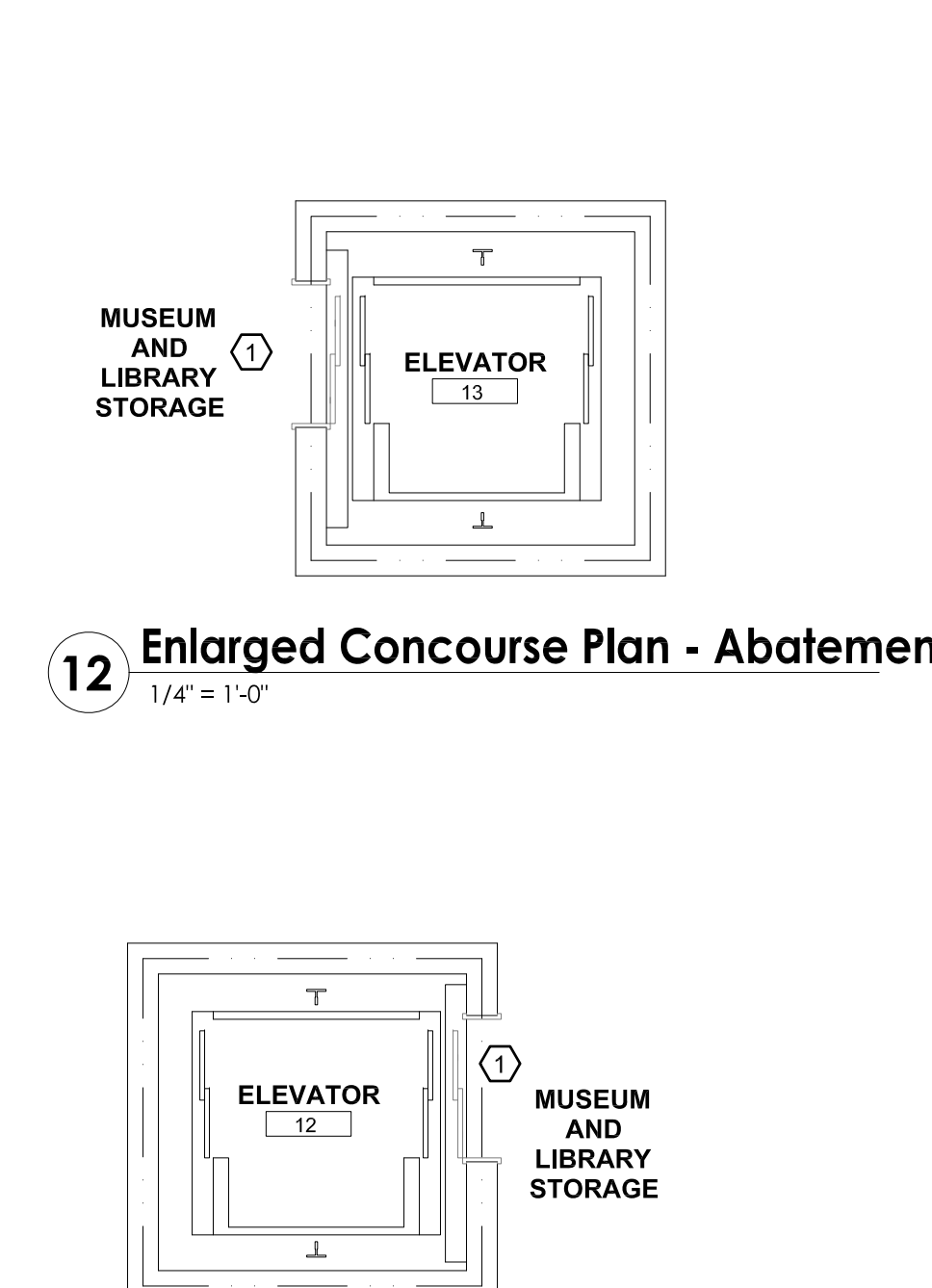
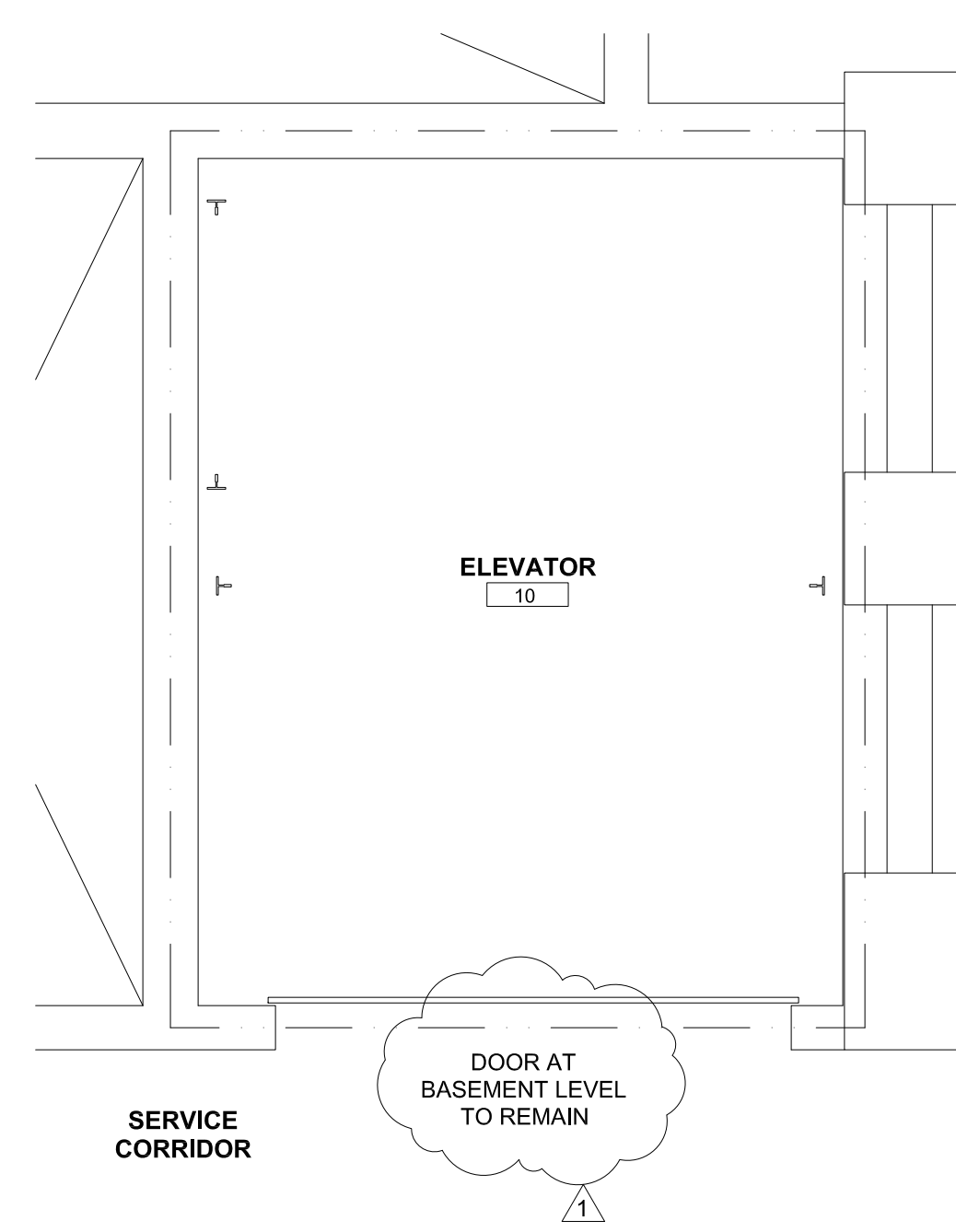
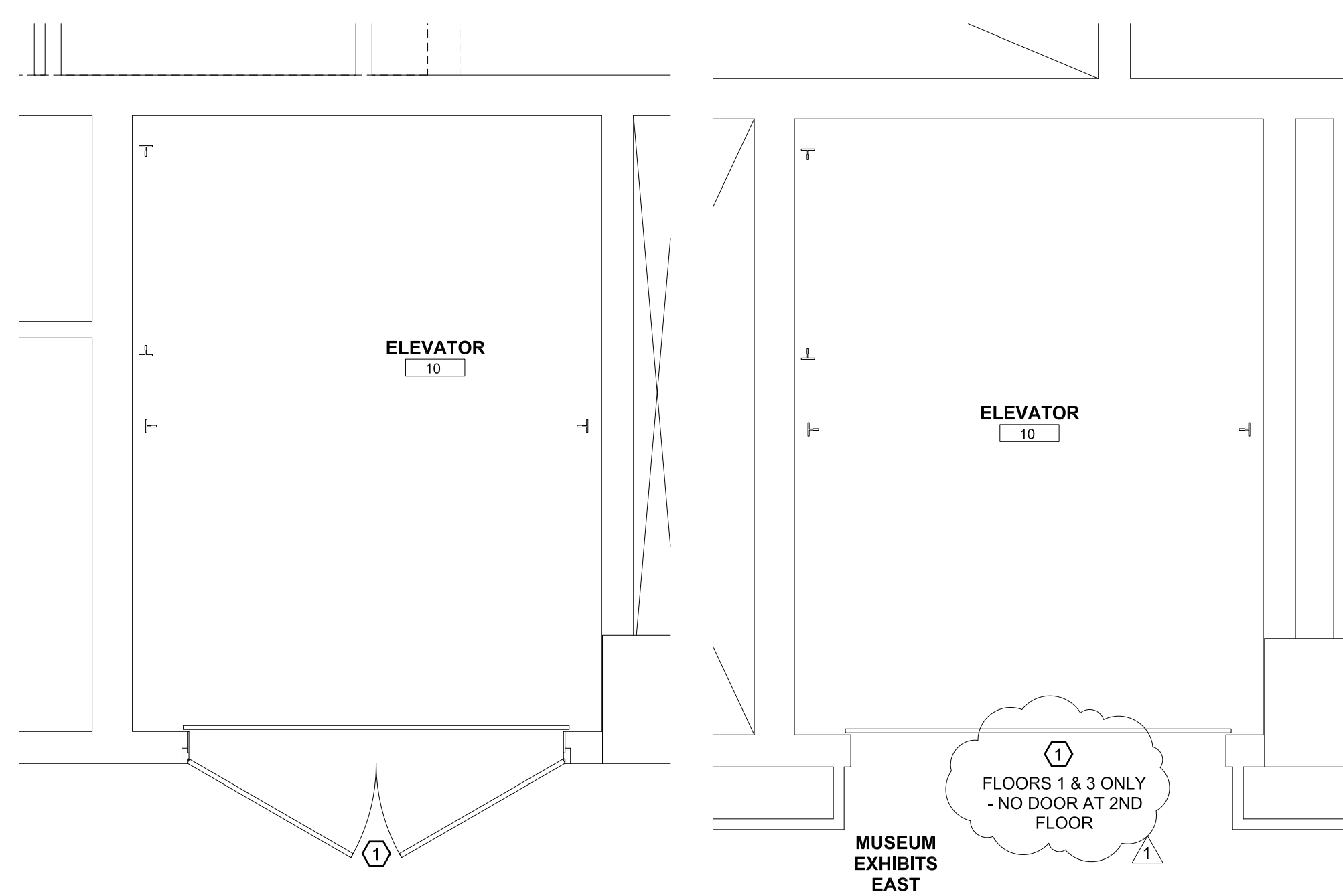
FIELD CHECK:

APPROVED:

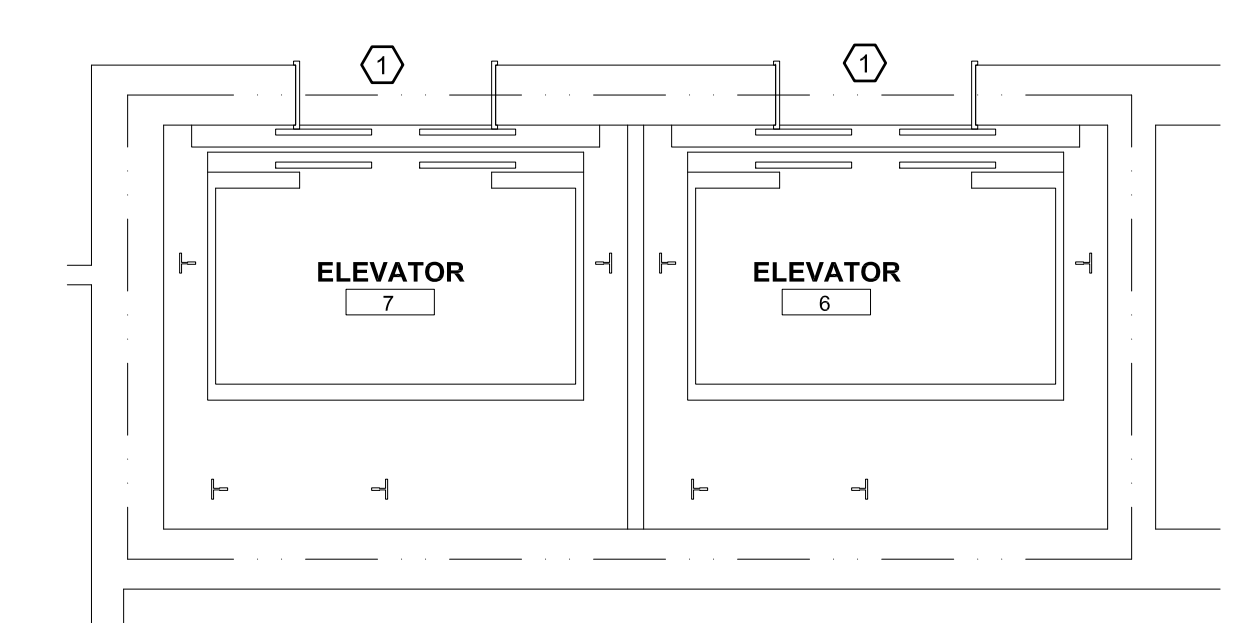
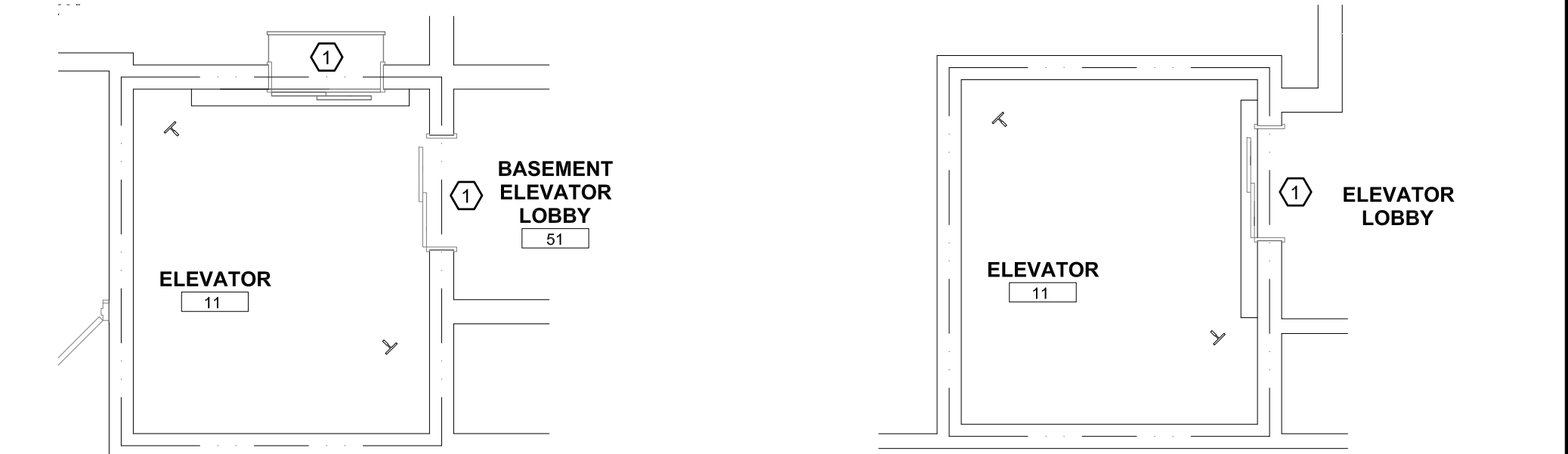
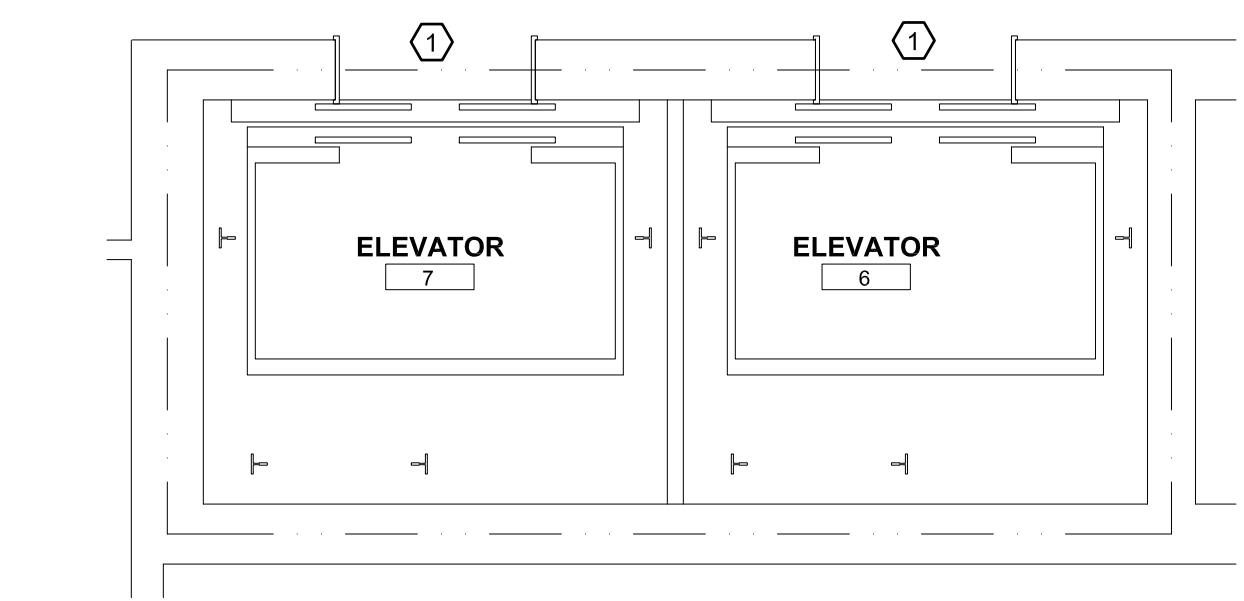
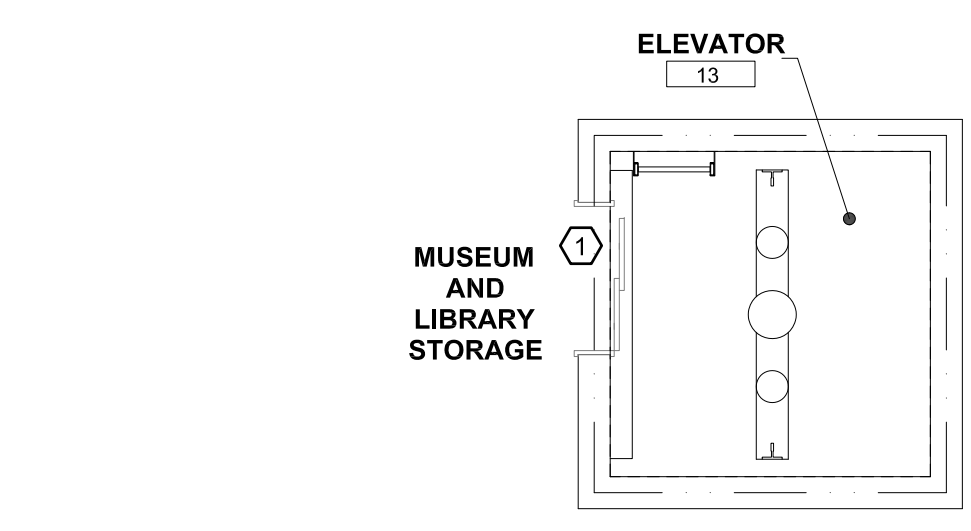
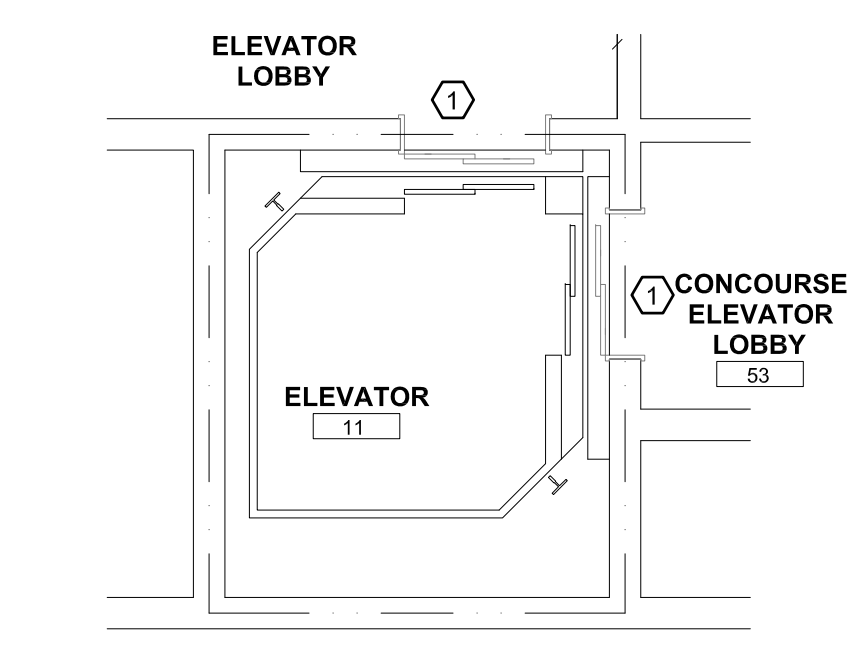
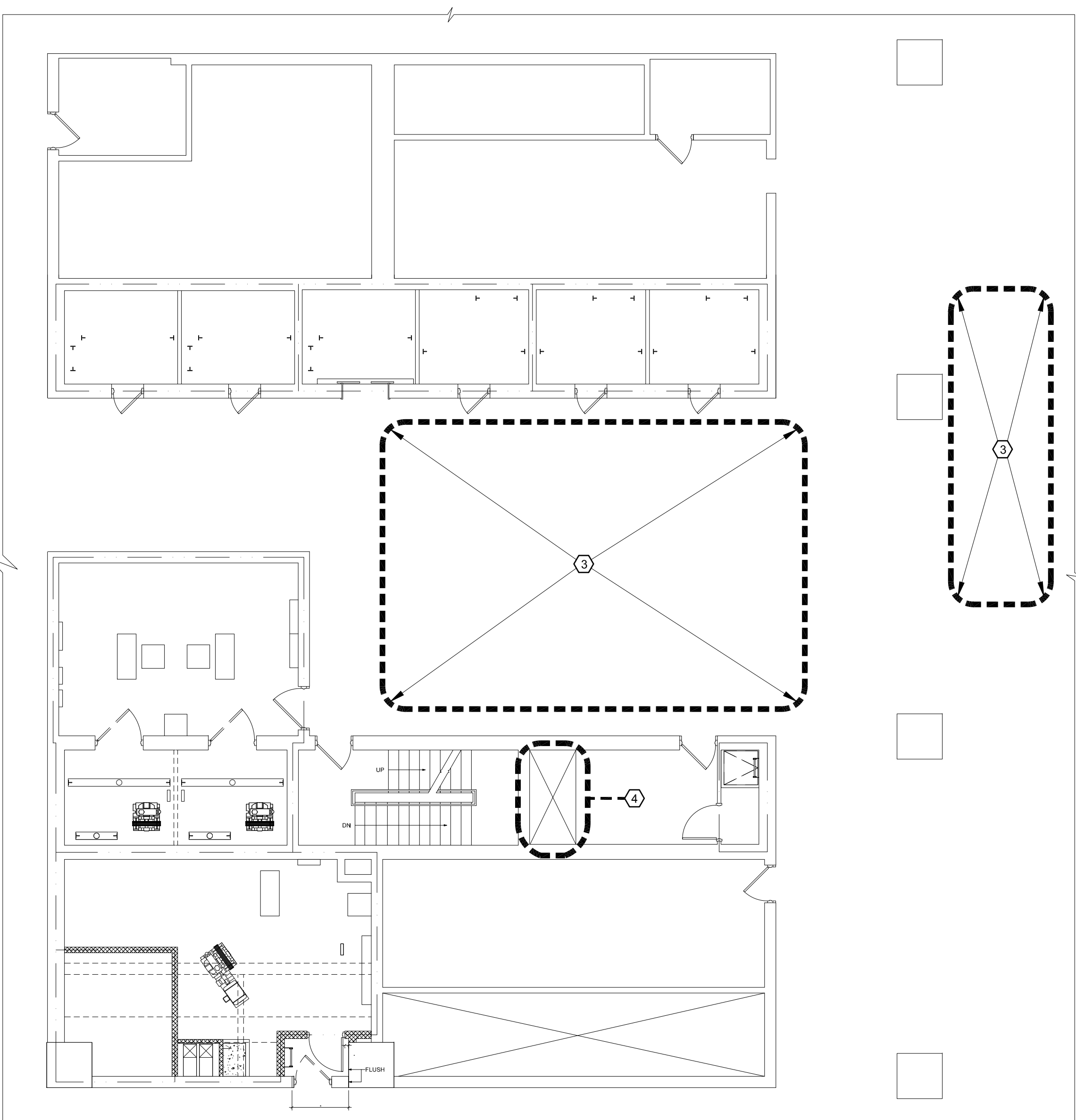
SHEET TITLE:

CODE INFORMATION AND SITE PLAN

DRAWING NUMBER:
G-101



- ### ASBESTOS ABATEMENT KEYNOTE LEGEND
- REMOVE AND DISPOSE OF EXISTING ELEVATOR HOISTWAY DOORS AS ASBESTOS CONTAINING MATERIAL - TYP. FOR 2,648 SQ. FT. - ALL HOISTWAY DOORS UNLESS NOTED OTHERWISE
 - REMOVE AND DISPOSE OF FLOOR TILÉ & MASTIC IN ELEVATOR CAB WHERE INDICATED AS ASBESTOS CONTAINING MATERIAL - TYP. FOR 31 SQ. FT. OF FLOOR AREA
 - REMOVE AND DISPOSE OF VALVE / FLANGE GASKETS ON CONDENSERS / FLASH TANKS / HEAT EXCHANGERS / CONDENSER LINES AS ASBESTOS CONTAINING MATERIAL - TYP. FOR 60 VALVES/FLANGES (30 SQ. FT.)
 - REMOVE AND DISPOSE OF CONDENSATE PUMP SKID AS ASBESTOS CONTAINING MATERIAL - TYP. FOR 1 UNIT.
- ### GENERAL ABATEMENT NOTES:
- SPECIFICATION SECTION 028213, 028304 AND THE ABATEMENT KEYNOTE LIST APPROXIMATE QUANTITIES FOR REMOVAL, BUT THE CONTRACTOR IS ALONE RESPONSIBLE FOR DETERMINING THE ACTUAL ABATEMENT QUANTITIES OF ACM AND LEAD INCLUDING, SIZES, LENGTHS, SQUARE FOOTAGES AND CONFIGURATIONS.
 - THIS FACILITY WILL BE OCCUPIED DURING CONSTRUCTION WORK.
 - SHUT DOWN AND ISOLATE EXISTING MECHANICAL EQUIPMENT SYSTEMS TO PREVENT CONTAMINATION AND DISPERSAL TO OTHER AREAS IN THE BUILDING. COORDINATE WITH THE DIRECTOR'S REPRESENTATIVE.
 - ANY CRITICAL ELECTRICAL RUNS THROUGH THE WORK AREA SHALL REMAIN ACTIVE DURING THE ENTIRE ABATEMENT PROCESS. CONTRACTOR SHALL BE RESPONSIBLE FOR ANY REQUIRED VARIANCES REQUIRED TO MAINTAIN CRITICAL ELECTRICAL RUNS.
 - ALL SCHEDULED ABATEMENT WORK SHALL BE COORDINATED WITH THE DIRECTOR'S REPRESENTATIVE. FOLLOW ALL RULES AND REGULATIONS OF NYS ICR 56, EPA, OSHA AND OTHER APPLICABLE FEDERAL, STATE AND LOCAL REGULATIONS DURING THE ENTIRE PROJECT.
 - ATTEND THE PRE-WORK CONFERENCE AND PROVIDE A DETAILED ABATEMENT WORK PLAN FOR REVIEW.
 - BE RESPONSIBLE FOR ON-SITE SAFETY AND SECURITY OF THEIR EMPLOYEES DURING ALL HAZARDOUS REMOVAL ACTIVITIES. ASSUME RESPONSIBILITY FOR PROCEEDING WITH THE WORK IN A MANNER THAT OFFERS EMPLOYEES A WORKPLACE FREE FROM RECOGNIZED HAZARDS CAUSING SERIOUS HEALTH, HARM OR INJURY.
 - PROVIDE TO THE DIRECTOR'S REPRESENTATIVE ALL WASTE TRANSPORTER PERMITS, WASTE DISPOSAL RECEIPTS AND THE CONTRACTORS POST ABATEMENT REPORT. SEE THE CLOSETOUT SUBMITTAL SECTION IN EACH OF THE ABATEMENT SPEC SECTIONS FOR DETAILS.
 - VERIFY THAT LANDFILL ACCEPTS ALL OF THE TYPES OF HAZARDOUS MATERIALS WITHIN PROJECTS SCOPE OF WORK.
 - ANY REMOVAL WORK OR ANY OTHER WORK IN THESE AREAS SHALL COMMENCE ONLY AFTER THE HAZARDOUS MATERIAL REMOVAL WORK IS COMPLETED AND ONLY AFTER THE NECESSARY CLEARANCES ARE OBTAINED.
 - UPON COMPLETION OF HAZARDOUS MATERIAL REMOVALS WORK, ANY EXISTING AREAS AND/OR FINISHES THAT HAVE BEEN DAMAGED THAT ARE NOT PART OF THE REMOVAL SCOPES OF WORK (INCLUDES AREAS AND/OR FINISHES AS A RESULT OF ANY TEMPORARY PARTITIONS AND WASTE DECON UNIT ENCLOSURES CONSTRUCTION) SHALL BE RESTORED TO ORIGINAL CONDITIONS AT NO ADDITIONAL COST TO THE STATE. FINISH RESTORATION SHALL BE APPROVED BY THE DIRECTOR'S REPRESENTATIVE.
 - COORDINATE ABATEMENT OF ELEVATOR COMPONENTS WITH THE ELEVATOR CONTRACTOR. COORDINATE ABATEMENT OF GASKETS & SKIDS WITH PLUMBING CONTRACTOR
 - THE RESULTS OF THE TESTING FOR ACM & PCB'S ARE LISTED IN THE BUILDING ASBESTOS SURVEY REPORT BOUND IN THE APPENDIX OF THE SPECIFICATIONS. REFER TO SPEC. SECTION 003126.
 - ASBESTOS SURVEY REPORT BOUND IN THE APPENDIX OF THE PROJECT MANUAL.
 - WORK SHALL BE PERFORMED IN ACCORDANCE WITH SPEC SECTIONS 028213.
 - REFER TO SECTION 028304 FOR HANDLING OF LEAD CONTAINING MATERIALS.



REVISED DRAWING 4/5/2024

NEW YORK STATE Office of General Services
DESIGN & CONSTRUCTION

CONSULTANT
CERTIFICATE OF AUTHORIZATION #: 1127432

Ar
Architectural Resources
PDG
POPLI DESIGN GROUP
JADESTONE
ENGINEERING, PLLC
Adelaide
ENVIRONMENTAL HEALTH
SPRING LINE DESIGN
ARCHITECTURE + ENGINEERING

WARNING:
THE ALTERATION OF THIS MATERIAL IN ANY WAY, UNLESS DONE UNDER THE DIRECTION OF A COMPARABLE PROFESSIONAL, I.E. ARCHITECT FOR AN ARCHITECT, ENGINEER FOR AN ENGINEER OR LANDSCAPE ARCHITECT FOR A LANDSCAPE ARCHITECT, IS A VIOLATION OF THE NEW YORK STATE EDUCATION LAW AND/OR REGULATIONS AND IS A CLASS 'A' MISDEMEANOR.

REGISTERED ARCHITECT
PAUL RICHARD DEBO
STATE OF NEW YORK
202811
REGISTRATION EXPIRES:
08/31/2028

CONTRACT: **CONSTRUCTION**
TITLE: **REHABILITATE ELEVATORS**
LOCATION: **CULTURAL EDUCATION CENTER
222 MADISON AVENUE
ALBANY, NY**
CLIENT: **OFFICE OF GENERAL SERVICES**

MARK	DATE	DESCRIPTION
1	4.5.2024	REVISED DRAWING
	02.14.2024	BID DOCUMENTS

PROJECT NUMBER: **45832 - C**
DESIGNED BY: **AEHA**
DRAWN BY: **PRC**
FIELD CHECK:
APPROVED:
SHEET TITLE: **ELEVATORS #6, 7, 8 & 11
PARTIAL OVERALL AND
ENLARGED FLOOR PLANS
- ABATEMENT -**
DRAWING NUMBER: **H-102**

SHEET 6 OF 81

ELEVATOR SCHEDULE																								
ELEVATOR	MACHINE	TYPE	CAPACITY (LBS)	SPEED (FPM)	LANDINGS (F - FRONT, R - REAR, S - SIDE)											PIT DEPTH (V.I.F.)	TOTAL TRAVEL (V.I.F.)	OVERHEAD (V.I.F.)						
					T	B (S1)	BP	S2	C (S3)	TV	1	2	3	4	M				5	6	7	8	9	10
1 & 2	BASEMENT GEARLESS TRACTION	PASSENGER	4000	350		F			F**	F*	F	F	F	R	R	R	R	R	R	R	R	WALK-IN	172'-0"	15'-9"
3	BASEMENT GEARLESS TRACTION	PASSENGER	3000	350					F**	F*	F	F	F	F*	F	F*	F*	F				8'-0"	144'-0"	15'-9"
4 & 5	BASEMENT GEARLESS TRACTION	PASSENGER	3000	350					F**	F*	F	F	F	F*	F	F*	F*	F				8'-0"	144'-0"	15'-9"
6 & 7	BASEMENT GEARLESS TRACTION	PASSENGER	3000	200										F*	F**	F	F				F	WALK-IN	64'-0"	15'-3"
8	BASEMENT GEARLESS TRACTION	PASSENGER	4000	200					F**	F*	F	F	F									8'-0"	53'-8"	16'-5"
9	BASEMENT GEARLESS TRACTION	PASSENGER	4000	350		F			F**	F*	F	F	F	R	R	R	R	R	R	R	R	WALK-IN	172'-0"	15'-9"
10	OVERHEAD GEARED TRACTION	FREIGHT	21000	100		F*			F**	F	F											10'-11"	68'-0"	26'-4"
11	BORE-HOLE HYDRAULIC	PASSENGER	4000	150		S	F	S	F**	S	F*	F										5'-5 1/2"	45'-6"	13'-4"
12	BORE-HOLE HYDRAULIC	PASSENGER	1500	100		F**			R	F*												4'-7"	14'-9"	11'-8"
13	BORE-HOLE HYDRAULIC	PASSENGER	1500	100		F**			R	F*												5'-4"	14'-9"	11'-8"

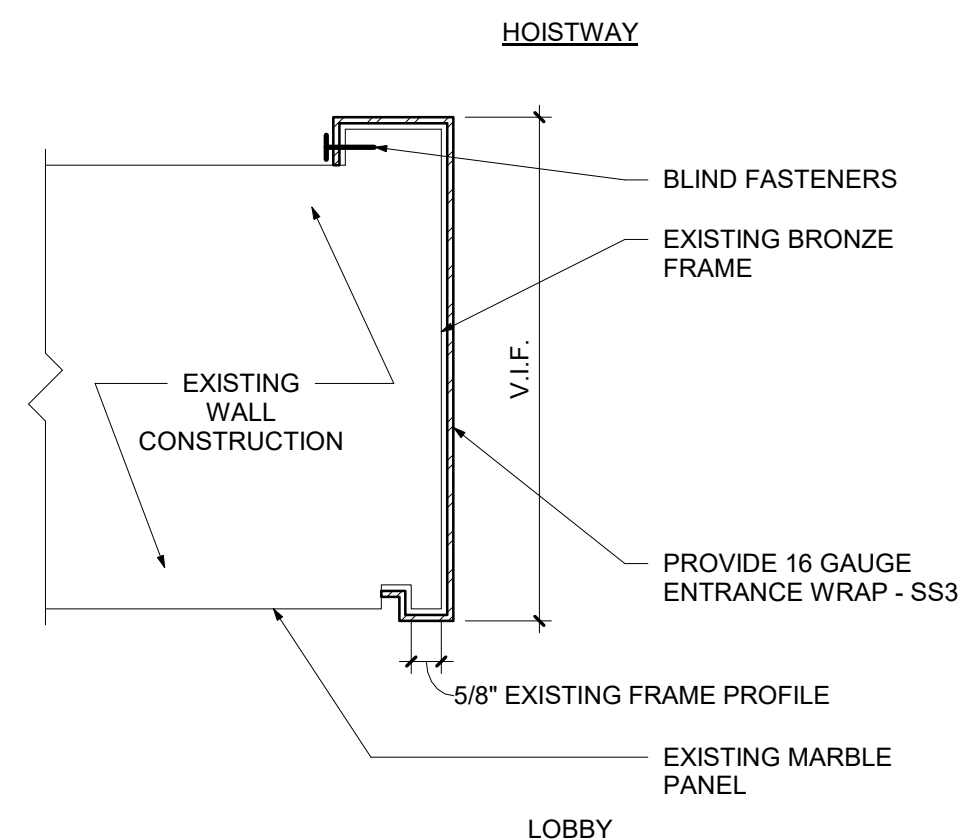
NOTE:
 1. ENTRANCE AT THIS LANDING TO BE PROGRAMMED TO BE OPERATIONAL ONLY DURING PHASE 2 OPERATION. REFER TO SPECIFICATIONS.
 * DESIGNATED RECALL LANDING
 ** ALTERNATE RECALL LANDING

ELEVATOR CONTRACT FINISH SCHEDULE			
DESIGNATION	MATERIAL	DESCRIPTION	
SS-1	STAINLESS STEEL BASE METAL	MANUFACTURER: FINISH: TEXTURE:	RIGIDIZED METALS STAINLESS STEEL #4 SATIN
SS-2	BASE METAL	MANUFACTURER: FINISH: TEXTURE:	RIGIDIZED METALS STAINLESS STEEL 2B MILL
SS-3	BASE METAL	MANUFACTURER: FINISH: TEXTURE: LOCATION:	RIGIDIZED METALS BRONZE #4 SATIN INCLUDES HOISTWAY ENTRANCE DOOR, FRAME, AND FIXTURES
SS-4	BASE METAL	MANUFACTURER: FINISH: TEXTURE:	RIGIDIZED METALS STAINLESS STEEL WITH BRONZE INSET 6WL
LP-1	HIGH-COMPACT LAMINATE	MANUFACTURER: COLOR: STYLE:	SURFACE MATERIALS BLACK MATTE
LP-2	HIGH-COMPACT LAMINATE	MANUFACTURER: COLOR: STYLE:	SURFACE MATERIALS EXOTIC ROSEWOOD HIGH GLOSS
F-1	RUBBER TILE	MANUFACTURER: TYPE: DESIGN:	ARONSON'S FLOOR COVERING STEEL STUDDED BLACK RUBBER TILE SMOOTH SURFACE

COMMENTS:
 1. REFER TO FIXTURE AND CAR ELEVATION DETAILS FOR FINISH LOCATIONS.

HOISTWAY ENTRANCE FINISH SCHEDULE																	
ELEVATOR	LANDINGS (P = PAINT, W = WRAP *, - = NO ENTRANCE AT LANDING)											10	11				
	T	B (S1)	BP	S2	C (S3)	TV	1	2	3	4	M			5	6	7	8
1	-	P	-	-	P	-	P	P	W	P	-	P	P	P	P	P	P
2	-	P	-	-	P	-	P	P	W	P	-	P	P	P	P	P	P
3	-	-	-	-	W	-	W	W	W	W	-	W	-	W	-	W	W
4	-	-	-	-	W	-	W	W	W	W	-	W	-	W	-	W	W
5	-	-	-	-	W	-	W	W	W	W	-	W	-	W	-	W	W
6	-	-	-	-	-	-	-	-	-	-	W	P	P	P	-	-	P
7	-	-	-	-	-	-	-	-	-	-	W	P	P	P	-	-	P
8	-	-	-	-	W	-	W	W	W	W	-	-	-	-	-	-	-
9	-	P	-	-	P	-	P	P	W	P	P	P	P	P	P	P	P
10	-	P	-	-	-	-	P	-	P	P	-	-	-	-	-	-	-
11	P	P	P	-	P	P	P	P	-	-	-	-	-	-	-	-	-
12	-	P	-	P	P	-	-	-	-	-	-	-	-	-	-	-	-
13	-	P	-	P	P	-	-	-	-	-	-	-	-	-	-	-	-

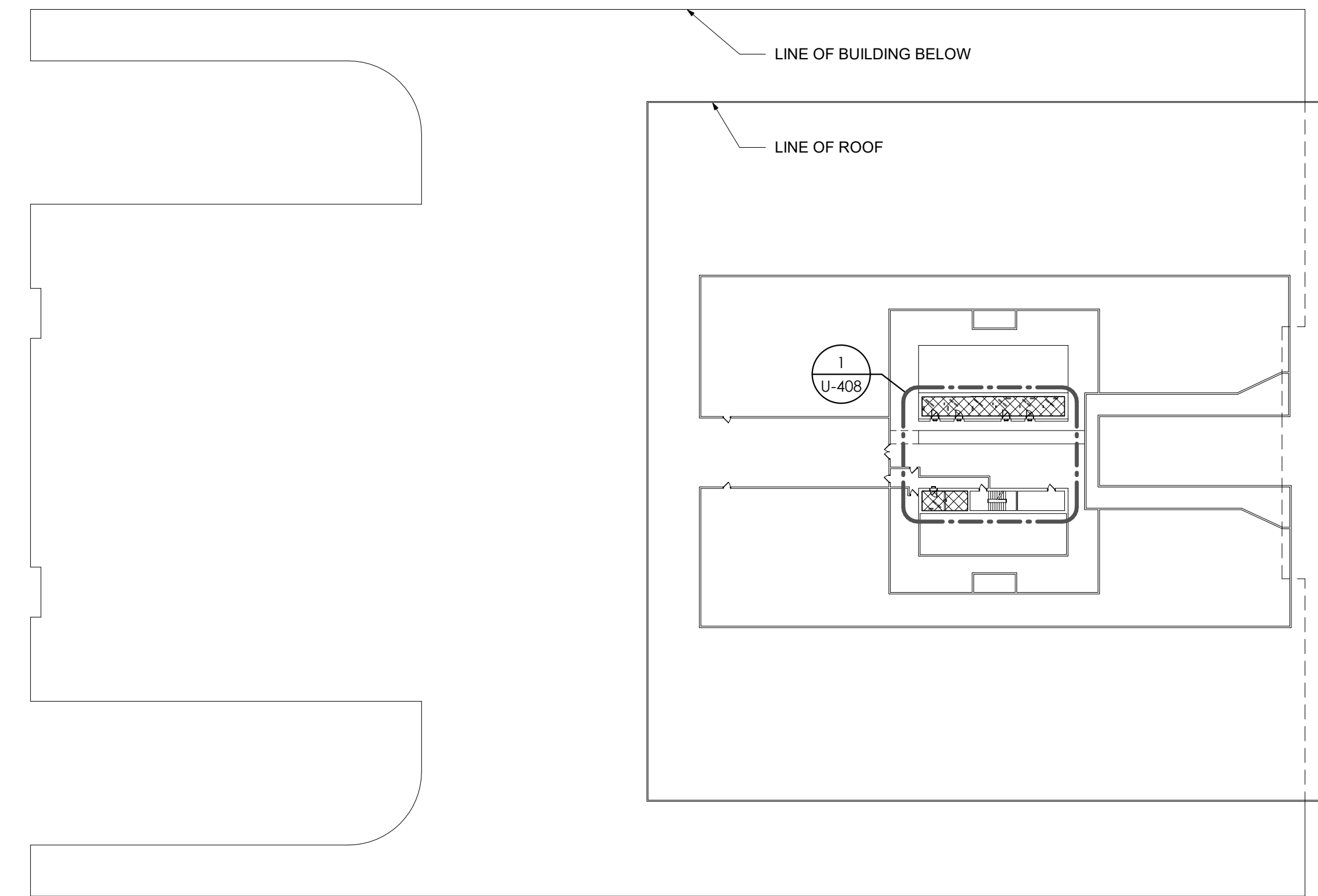
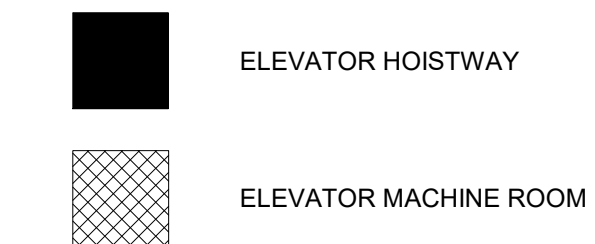
NOTE:
 * REFER TO DETAIL 3U-103 FOR HOISTWAY ENTRANCE FRAME WRAP DETAIL



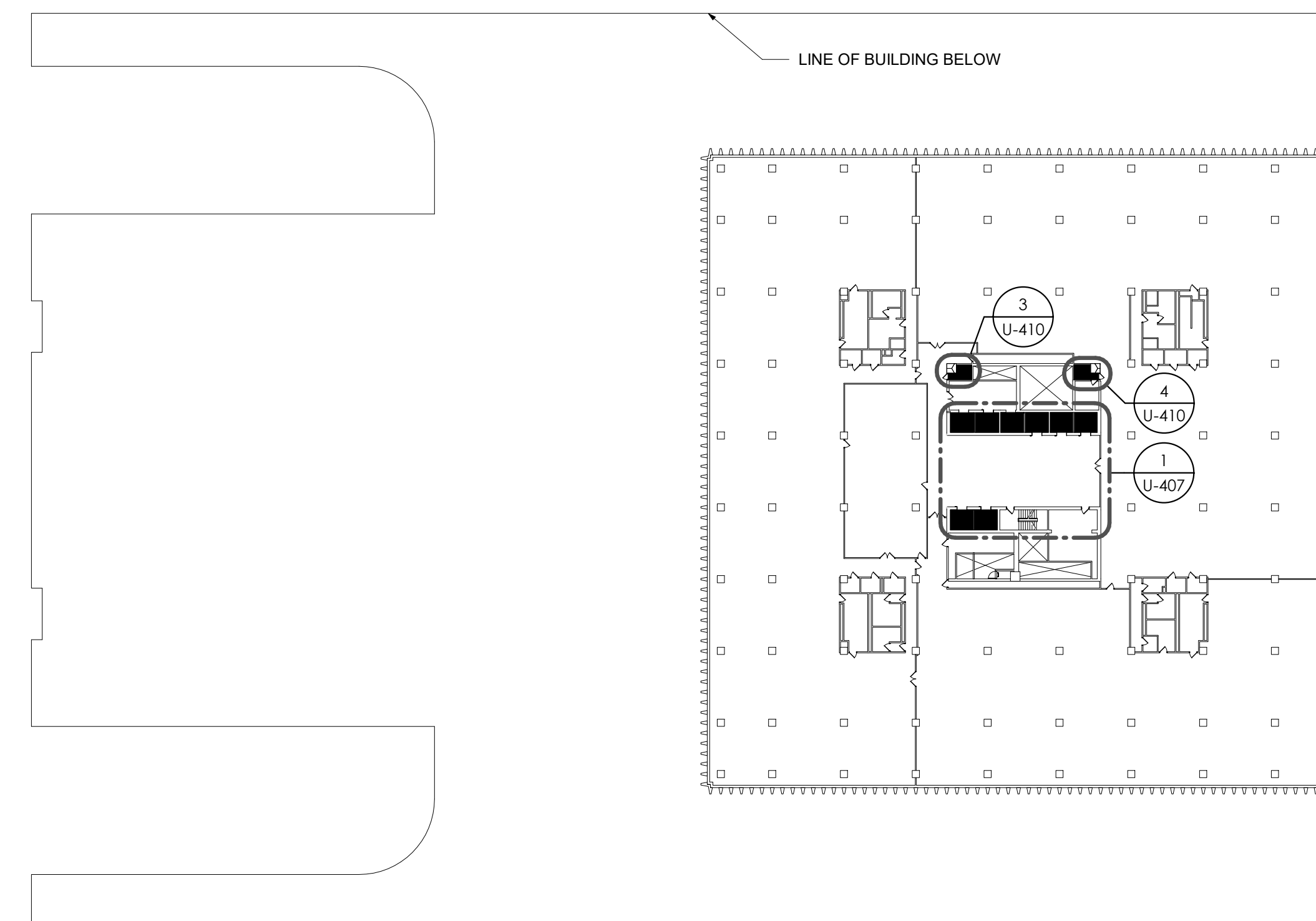
NOTE:
 1. THERE SHALL BE NO EXPOSED FASTENERS AT THE LOBBY SIDE.

3 Hoistway Entrance Frame Wrap
 3" = 1'-0"

Overall Plan Legend



2 Overall Penthouse Plan - Elevator Overhead Space
 1" = 50'-0"

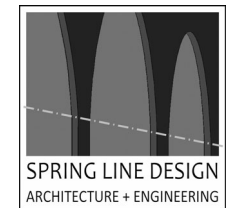


1 Overall Fifth Floor Plan (Typical At Hoistways 6-11)
 1" = 50'-0"

REVISED DRAWING 4/5/2024



Architectural Resources



WARNING:
 THE ALTERATION OF THIS MATERIAL IN ANY WAY, UNLESS DONE UNDER THE DIRECTION OF A COMPARABLE PROFESSIONAL, I.E. ARCHITECT FOR AN ARCHITECT, ENGINEER FOR AN ENGINEER OR LANDSCAPE ARCHITECT FOR A LANDSCAPE ARCHITECT, IS A VIOLATION OF THE NEW YORK STATE EDUCATION LAW AND/OR REGULATIONS AND IS A CLASS 'A' MISDEMEANOR.

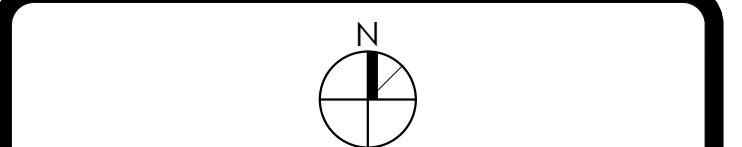


REGISTRATION EXPIRES:
 12/31/2028

CONTRACT: ELEVATOR
 TITLE: REHABILITATE ELEVATORS

LOCATION:
 CULTURAL EDUCATION CENTER
 222 MADISON AVENUE
 ALBANY, NY

CLIENT:
 OFFICE OF GENERAL SERVICES

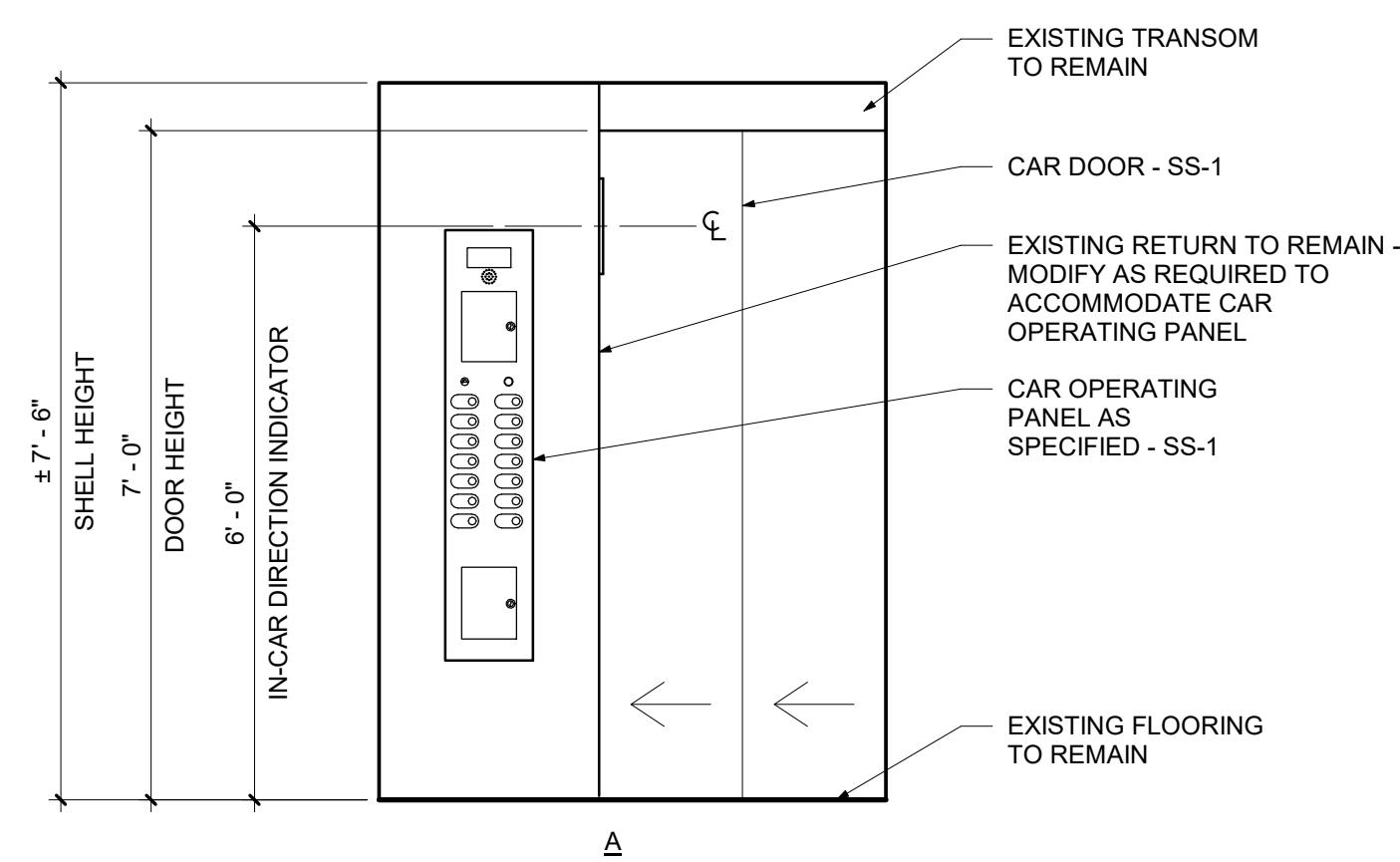
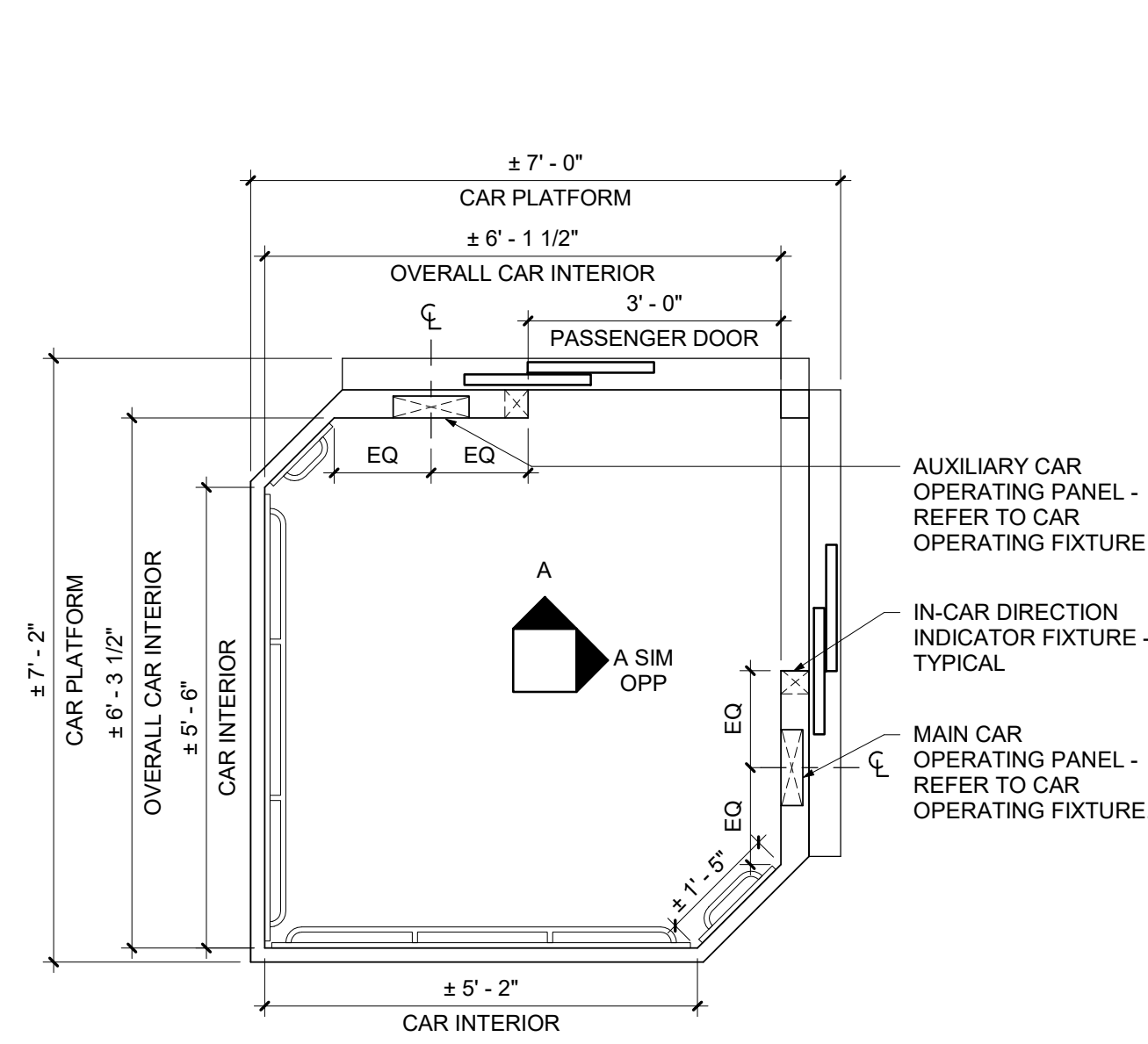


MARK	DATE	DESCRIPTION
1	4.5.2024	REVISED DRAWING
	2.14.2024	BID DOCUMENTS

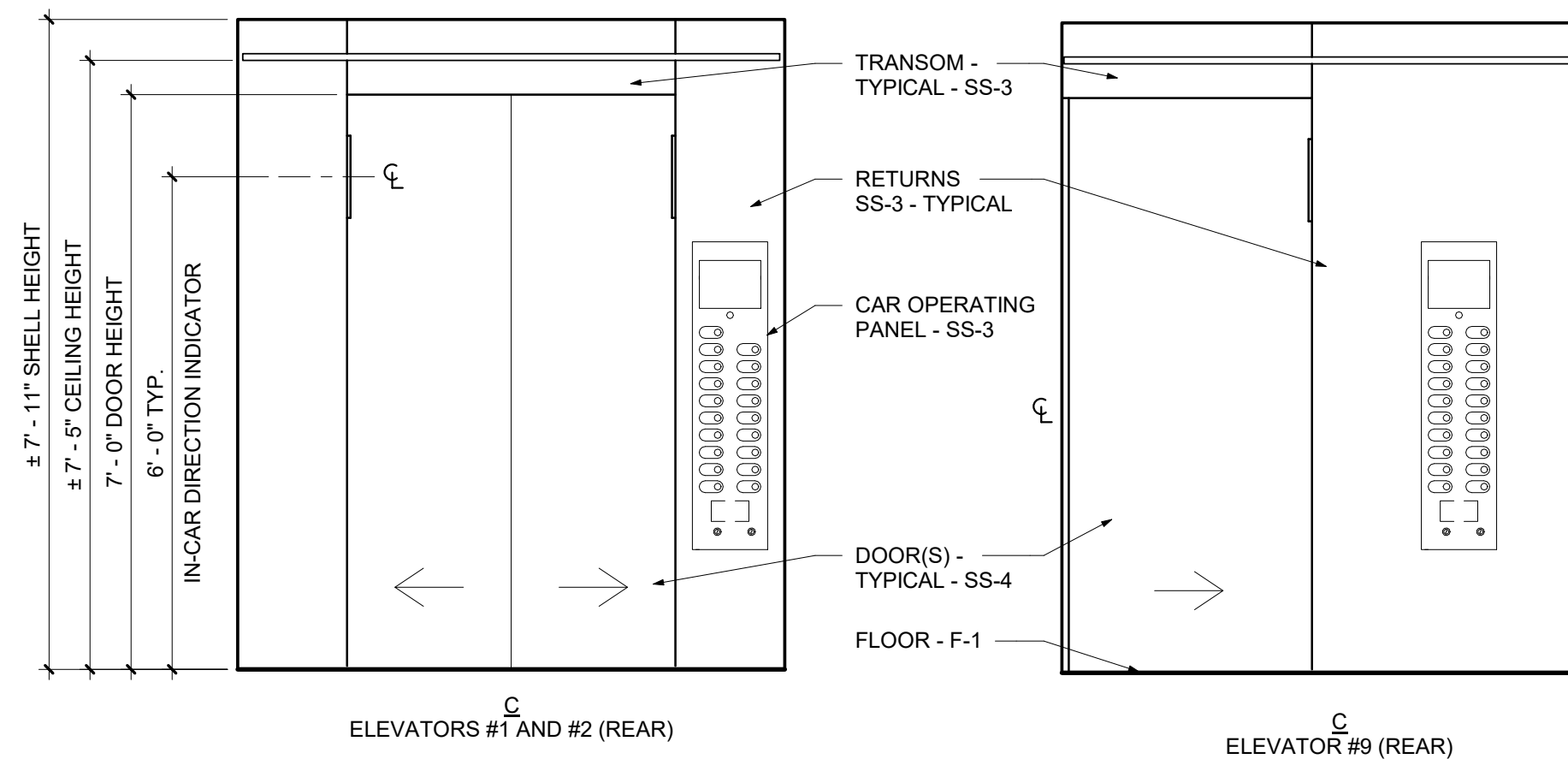
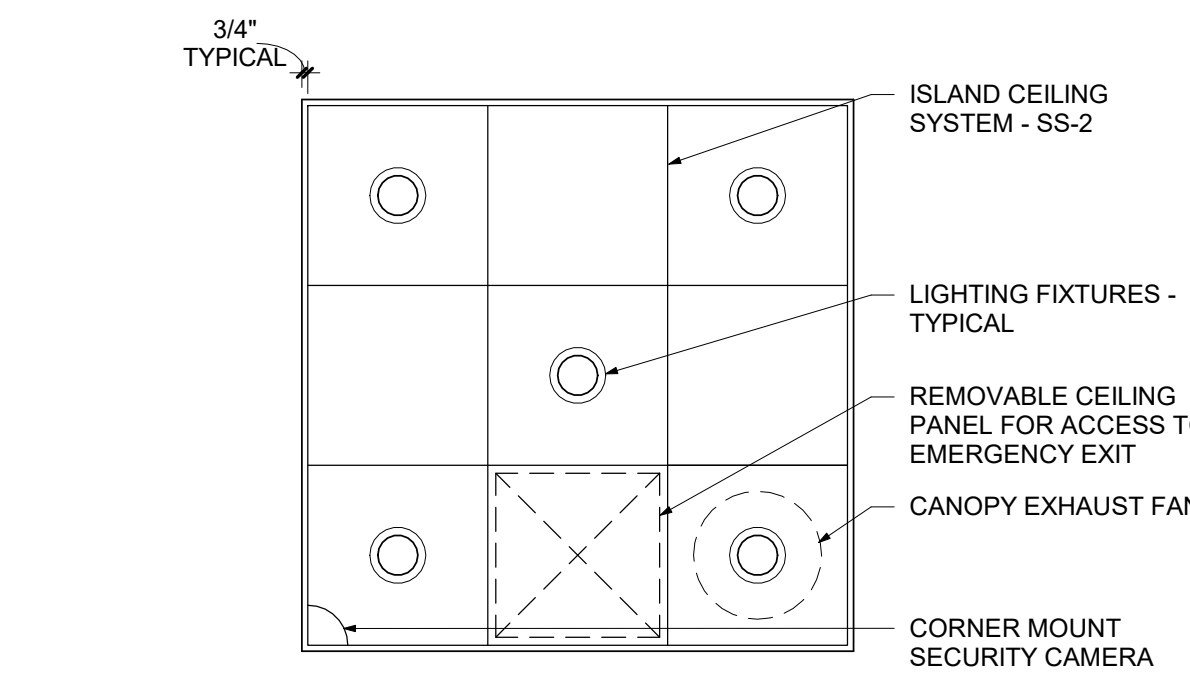
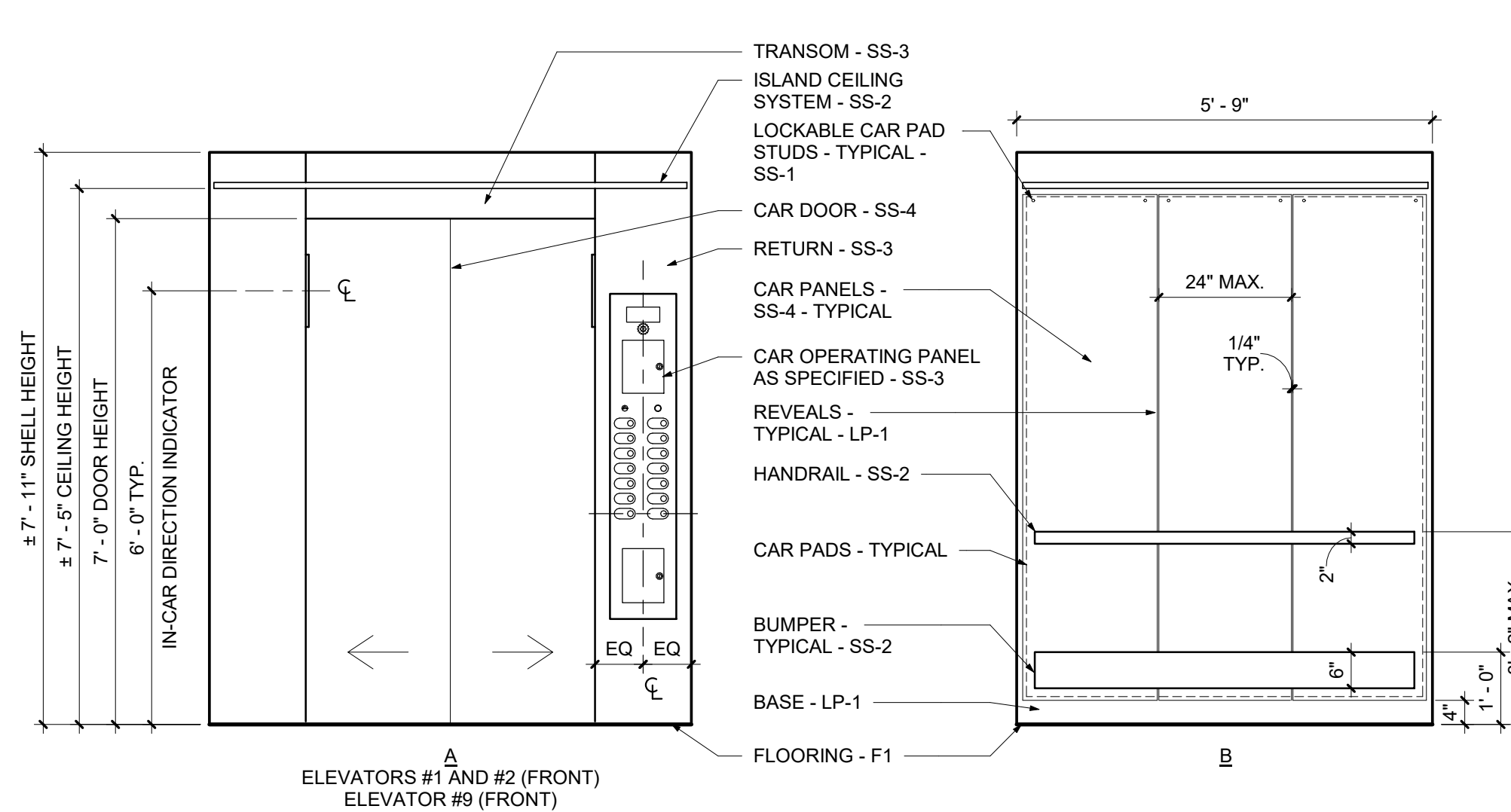
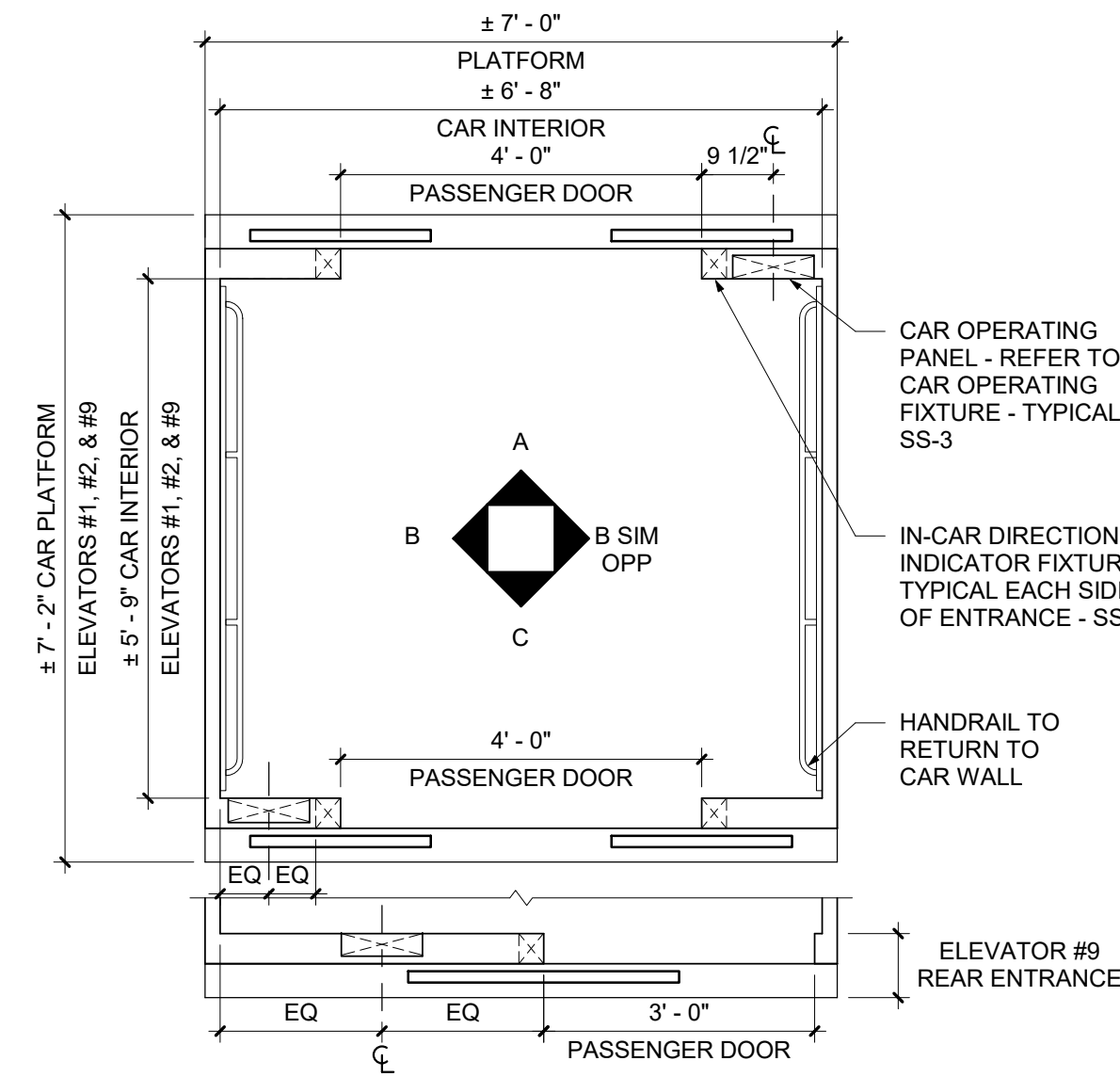
PROJECT NUMBER: 45832 - U
 DESIGNED BY: AJR
 DRAWN BY: RTR
 FIELD CHECK:
 APPROVED:

SHEET TITLE:
 OVERALL FLOOR PLANS

DRAWING NUMBER:
 U-103

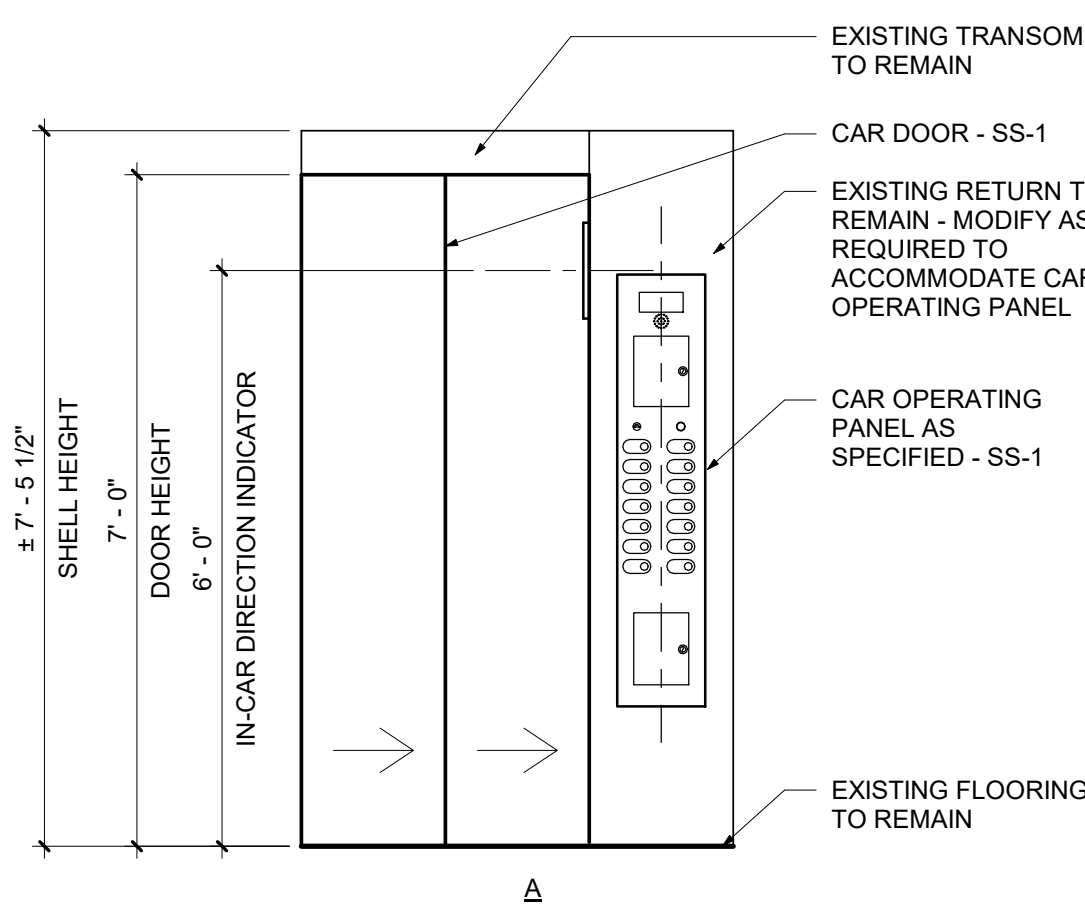
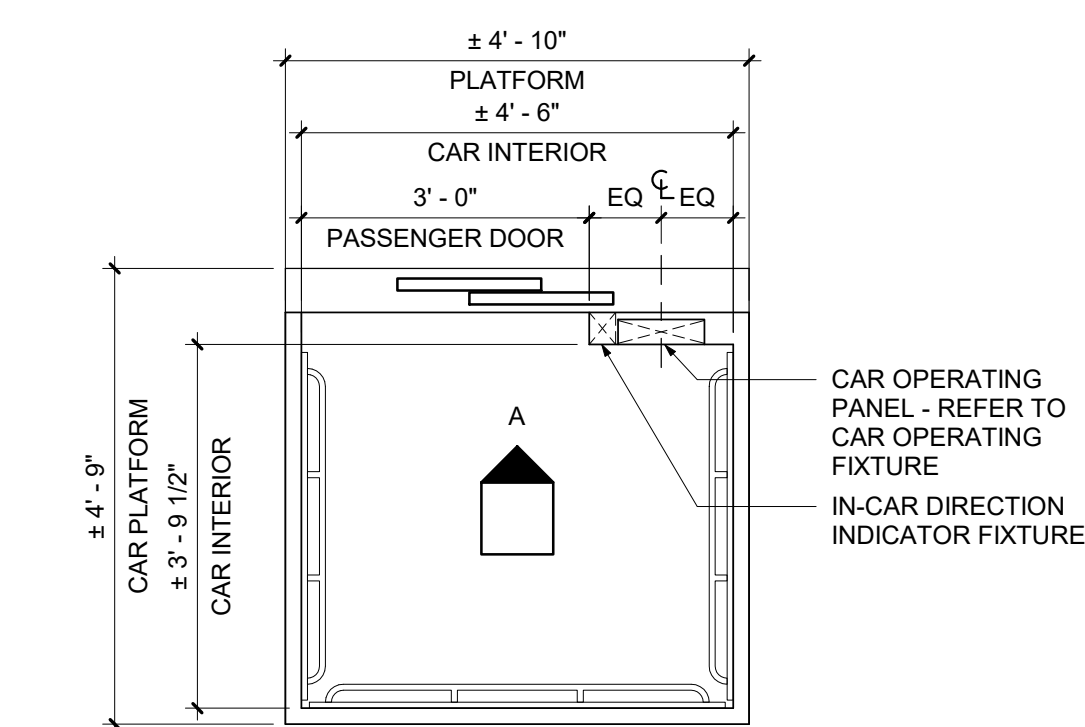


3 Interior Car Elevations - Elevator #11
1/2" = 1'-0"

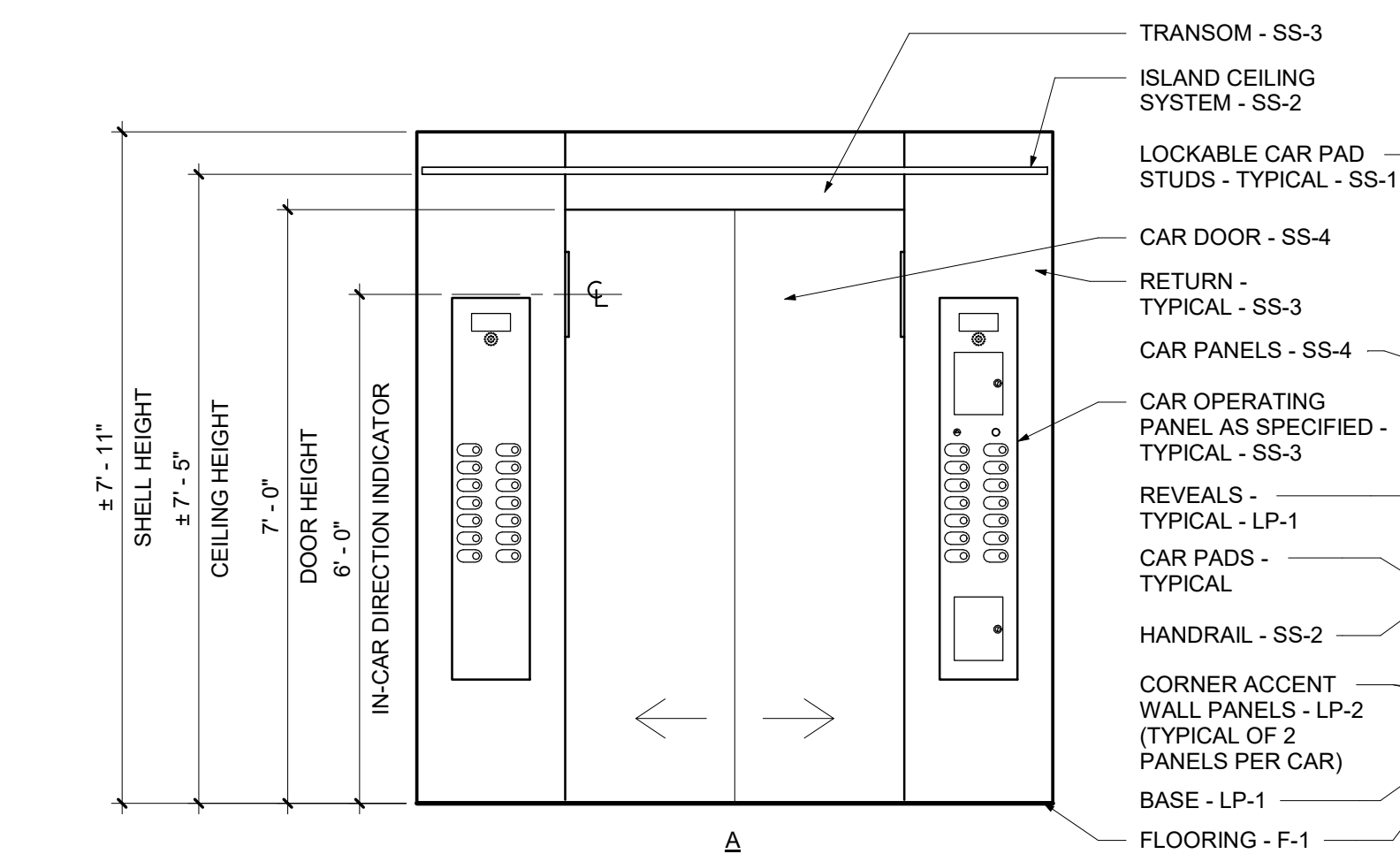
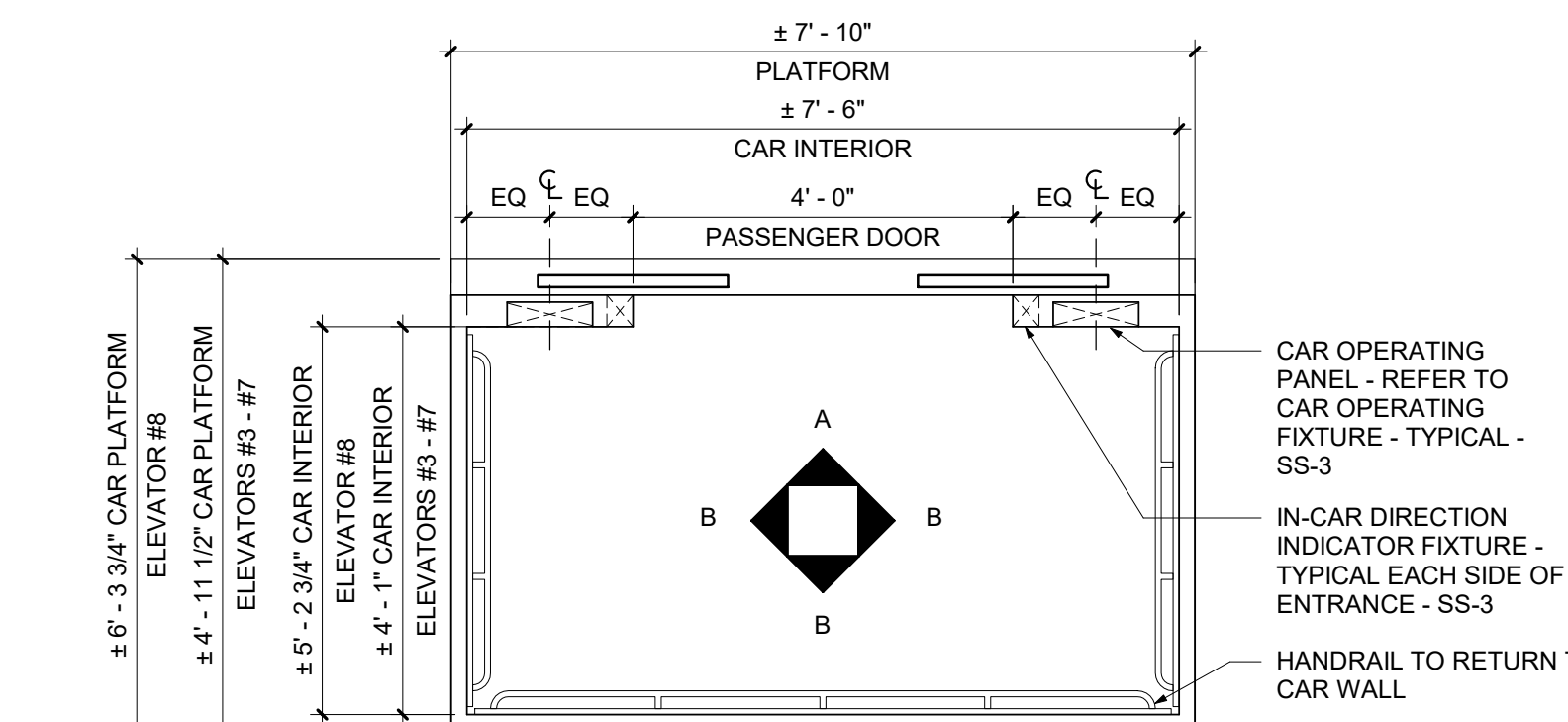


NOTE:
1. COORDINATE CORNER-MOUNT SECURITY CAMERA WITH DIRECTOR'S REPRESENTATIVE AND INSTALLED CAR TOP EQUIPMENT CLEARANCES.
2. COORDINATE LOCATION OF EXHAUST FAN AND EMERGENCY EXIT ACCESS PANEL WITH INSTALLED CAR TOP EQUIPMENT CLEARANCES.

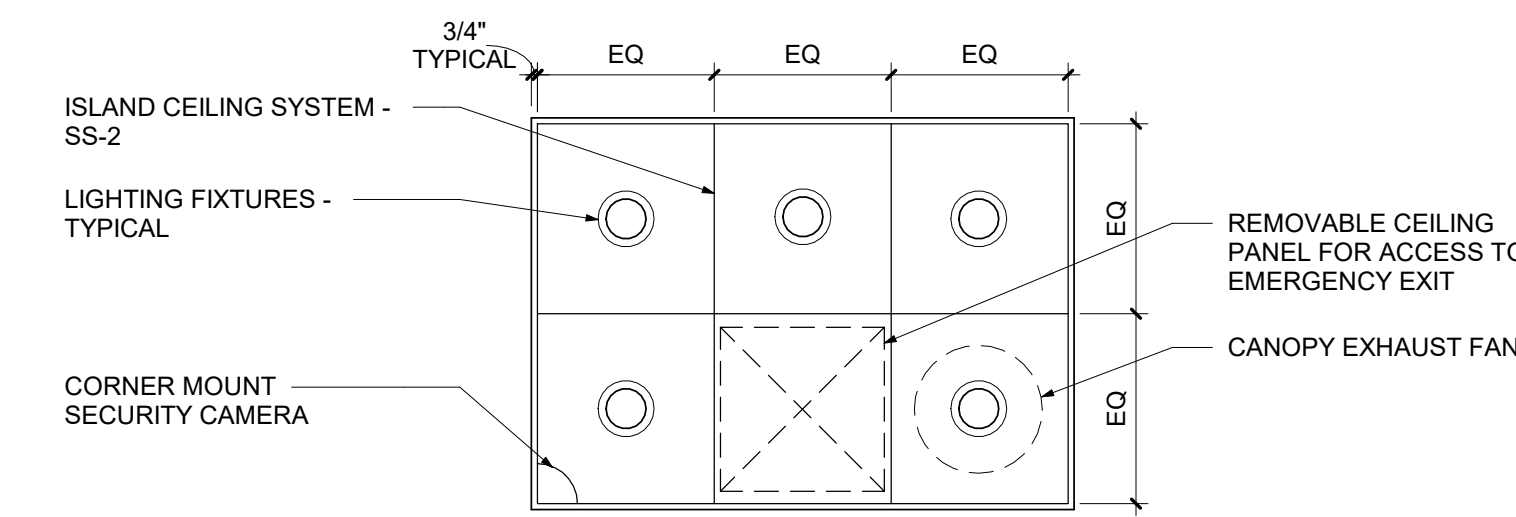
4 Interior Car Elevations - Elevators #1, #2, and #9
1/2" = 1'-0"



1 Interior Car Elevations - Elevators #12 and #13
1/2" = 1'-0"



2 Interior Car Elevations - Elevators #3, #4, #5, & #8
1/2" = 1'-0"



NOTE:
1. COORDINATE CORNER-MOUNT SECURITY CAMERA WITH DIRECTOR'S REPRESENTATIVE AND INSTALLED CAR TOP EQUIPMENT CLEARANCES.
2. COORDINATE LOCATION OF EXHAUST FAN AND EMERGENCY EXIT ACCESS PANEL WITH INSTALLED CAR TOP EQUIPMENT CLEARANCES.

3. INITIAL TURNOVER OF CAR #9 TO BE PROVIDED WITH FIRE RETARDANT TREATED PLYWOOD WALLS AND TEMPORARY LIGHTING WITH PROTECTIVE LENS, WITHIN CAB, UPON COMPLETION OF PHASE 2, ELEVATOR CAR #9 SHALL BE USED FOR MATERIAL TRANSPORT AS APPROVED BY DIRECTOR'S REPRESENTATIVE. SCHEDULED CAR APPLIED PANELS, ISLAND CEILING, LIGHTING, AND ALL CAB INTERIOR FASTENING ACCESSORIES TO BE SAFEGUARDED UNTIL INSTALLED. CONTRACTOR TO INSTALL CAR #9 CAB INTERIOR FINISHES AFTER COMPLETION OF STAFF ELEVATOR 7 WITHIN PHASE 7.

REVISED DRAWING 4/5/2024

NEW YORK STATE Office of General Services
DESIGN & CONSTRUCTION
CONSULTANT
CERTIFICATE OF AUTHORIZATION #: 1127432
Ar Architectural Resources
PDG POPLI DESIGN GROUP
JADESTONE ENGINEERING, PLLC
Adelaide ENVIRONMENTAL HEALTH
SPRING LINE DESIGN ARCHITECTURE + ENGINEERING

WARNING:
THE ALTERATION OF THIS MATERIAL IN ANY WAY, UNLESS DONE UNDER THE DIRECTION OF A COMPARABLE PROFESSIONAL, I.E. ARCHITECT FOR AN ARCHITECT, ENGINEER FOR AN ENGINEER OR LANDSCAPE ARCHITECT FOR A LANDSCAPE ARCHITECT, IS A VIOLATION OF THE NEW YORK STATE EDUCATION LAW AND/OR REGULATIONS AND IS A CLASS 'A' MISDEMEANOR.
REGISTERED ARCHITECT
KEVIN D. MURPHY
STATE OF NEW YORK
015991
REGISTRATION EXPIRES: 12/31/2028

CONTRACT: ELEVATOR
TITLE: REHABILITATE ELEVATORS
LOCATION: CULTURAL EDUCATION CENTER
222 MADISON AVENUE
ALBANY, NY
CLIENT: OFFICE OF GENERAL SERVICES

MARK	DATE	DESCRIPTION
1	4.5.2024	REVISED DRAWING
	2.14.2024	BID DOCUMENTS

PROJECT NUMBER: 45832 - U
DESIGNED BY: MCS
DRAWN BY: CMV
FIELD CHECK:
APPROVED:
SHEET TITLE: **DETAILS**
DRAWING NUMBER: **U-501**
SHEET 40 OF 81